



Signature

FASHION PLANE
FORMWORK



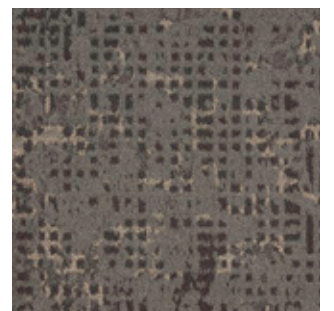
“Terra Cruda” describes one of humankind’s earliest architectural materials: raw earth, packed together as walls and floors or shaped into sun-baked bricks.

In use for millennia, terra cruda not only fosters a connection between the built world and landscape, but also creates a shared sense of culture across generations. The Terra Cruda Collection draws its inspiration from the rugged, natural textures and accumulative layers of these earthen forms.

- Two Patterns in Fashion Plane and Formwork, with additional pattern options in Alhambra, Facade and Taipa which are considered runningline when using the Terra Cruda colorways.
- ColorPoint technology with 3 colors
- 100% solution dyed nylon
- 32 oz. tufted pile weight
- Available in 24" x 24" and 12" x 48" carpet tile size



FASHION PLANE



FORMWORK

COVER: FORMWORK | 8412 PLASTER, 7414 CORDWOOD, 8422 SOD | 12" X 48" | CUSTOM HERRINGBONE INSTALL

Signature



FORMWORK | 7811 CLAY, 7821 ADOBE | 12" X 48" | ASHLAR INSTALL

SIGNATUREFLOORING.COM



FORMWORK & FASHION PLANE | 7821 ADOBE, 7811 CLAY, 4525 HENGE, 4515 WATER | 24" X 24" | RANDOM INSTALL

SIGNATUREFLOORING.COM





FORMWORK | 7424 DAUB | 24" X 24" | **FASHION PLANE** | 7414 CORDWOOD | 24" X 24" | CUSTOM INSTALL



FASHION PLANE | 7414 CORDWOOD | 24" X 24" | ASHLAR INSTALL



FORMWORK | 4525 HENGE, 8616 FLINT | 24" X 24" CONFERENCE AREA, 12" X 48" CORRIDOR | ASHLAR INSTALL
REAL APPEAL | 7403 DRIFTWOOD | 12" X 48" | 5MM LOOSE LAY LVT INSTALL WITH OUR CARPET TILE, NO TRANSITION NECESSARY

Additional Pattern Options

Three additional patterns give public spaces a dramatic edge and are designed for coordination and flexibility in creating unique spaces. Additional pattern options of Alhambra, Facade and Taipa are considered running line when using the Tera Cruda colorways.

- Featuring three additional patterns
- ColorPoint Technology
- 100% solution dyed nylon
- 32 oz. tufted pile weight
- Available in 24" x 24" carpet tile
- Additional pattern options are available as running line with no minimums using the Terra Cruda colorways

NOTE: For specifications on ADDITIONAL PATTERN OPTIONS, please visit our website at signatureflooring.com/resources



FACADE S4015 | 4515 WATER | 24" X 24" | QUARTER TURN FEATURED
ADDITIONAL PATTERN OPTION





ALHAMBRA S4014 | 7424 DAUB | 24" X 24" | ASHLAR INSTALL FEATURED | ADDITIONAL PATTERN OPTION

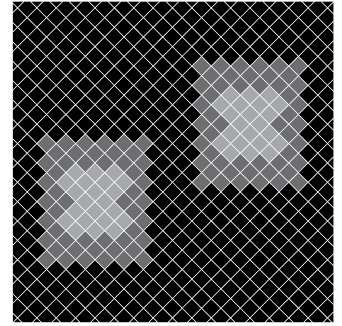
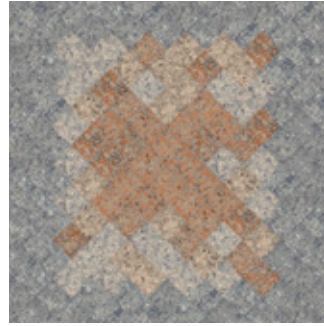
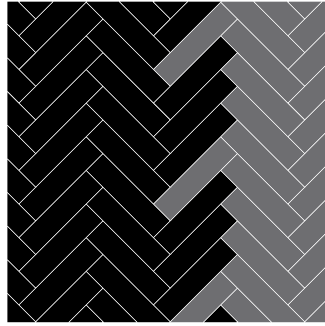
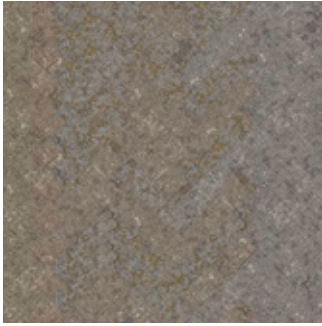


TAIPA S4013 | 7821 ADOBE | 24" X 24" | BRICK ASHLAR FEATURED | ADDITIONAL PATTERN OPTION

[SIGNATUREFLOORING.COM](https://signatureflooring.com)

CREATIVE FLOOR LAYOUTS

The following floor layouts are depicted in a few of the installations featured in this brochure. Both Formwork and Fashion Plane can be used alone or in combination to create any of the layouts shown.

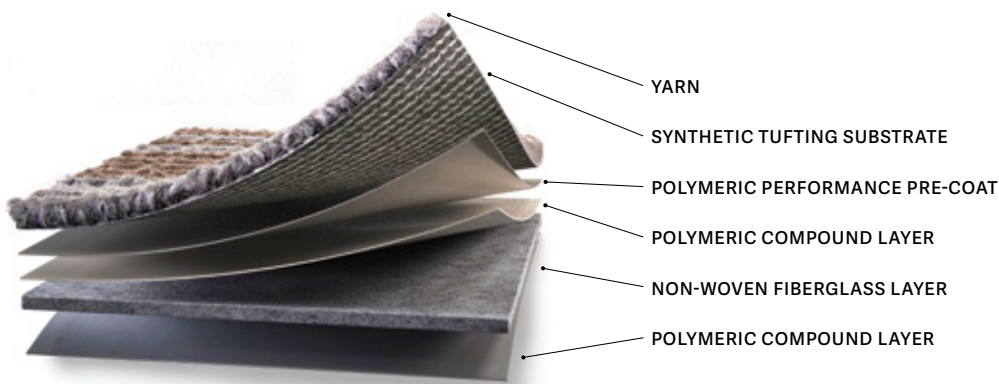


FORMWORK | 8412 PLASTER, 7414 CORDWOOD, 8422 SOD
12" X 48" | CUSTOM INSTALL SHOWN ON COVER

FORMWORK | 4525 HENGE, 7821 ADOBE
FASHION PLANE | 4515 WATER, 7811 CLAY, 7821 ADOBE
24" X 24" | CUSTOM INSTALL SHOWN ON PAGES 2 & 3

HIGH PERFORMANCE MODULAR BACKING

Signature's vinyl composite carpet tile backing is engineered for strong performance with excellent tuft bind and dimensional stability. This product resists delamination, edge ravel, pilling and fuzzing, and withstands aggressive wet cleanings.



RECOMMENDED INSTALLATION OPTIONS

Fashion Plane and Formwork are designed with randomness constructed into the pattern to enable tile-ability on the floor. Allowing for no pattern match. Each style with multiple tiles create a unique installation.

Fashion Plane or Formwork alone

24" X 24"

BRICK



ASHLAR



12" X 48"

ASHLAR



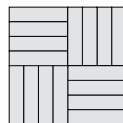
Fashion Plane and Formwork together

12" X 48"

HERRINGBONE



BASKETWEAVE

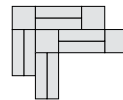


24" X 24" + 12" X 48"

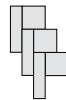
ASHLAR



HERRINGBONE



CUSTOM



Terra Cruda Custom Broadloom

Terra Cruda is also available in 9 custom broadloom patterns, featuring 100% solution dyed nylon, ColorPoint technology, 40 oz. tufted pile weight and 15' width. See the entire collection at signatureflooring.com/customcollections.

WE MAKE CUSTOM EASY

Signature is known for its dedication to helping customers achieve their unique vision for senior living and hospitality environments. We understand that you are incredibly busy and constantly have tight project timelines. So we offer a customization process that is fast, easy and doesn't require you to compromise your design vision to meet your deadlines.



STEP ONE

INSPIRATION

The first step to creating a signature floor is simply for you to send us your inspiration for the carpet's design. From this inspiration, we then begin to make your vision a reality.

STEP TWO

DESIGN

Our expert Design Team uses the inspiration to create the carpet design and then provides a 2D digital rendering of the carpet for your evaluation. Working closely with you ensures the carpet design fully captures your vision.

STEP THREE

CARPET SAMPLE

Once the digital rendering of the design is approved, we create a physical sample of the carpet (a "strike-off") and provide it for your evaluation and approval. Digitally rendered room scene images using the design are also available upon request.

STEP FOUR

PLANNING + ESTIMATING

We then render floor plans using the design and provide estimated quantities for project accuracy through our experienced Planning and Estimating Team.

STEP FIVE

PRODUCTION

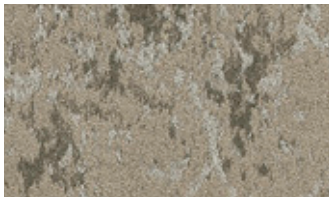
When the strike-off is approved, the order can be placed, and we create the custom carpet that is ready for installation. With a simple custom design process, Signature makes it easy for designers to create signature spaces.

To get started on your custom product, please contact your sales representative or call Signature at 800-809-7086.

COLORWAYS



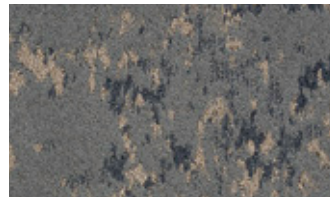
Both styles are available in 24" x 24" tiles and 12" x 48" planks



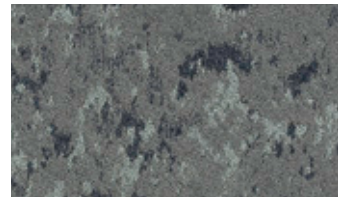
FASHION PLANE 1413 GRAIN



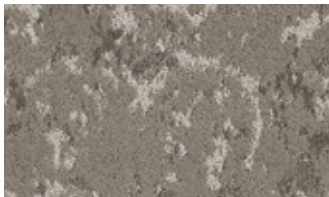
FASHION PLANE 1423 COB



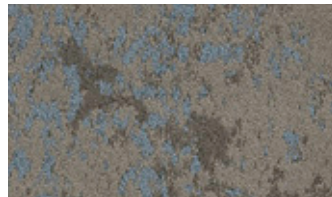
FASHION PLANE 4515 WATER



FASHION PLANE 4525 HENGE



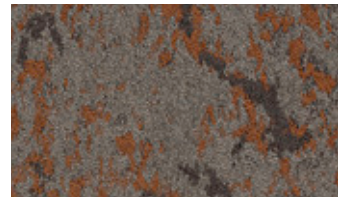
FASHION PLANE 7414 CORDWOOD



FASHION PLANE 7424 DAUB



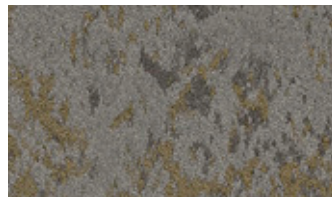
FASHION PLANE 7811 CLAY



FASHION PLANE 7821 ADOBE



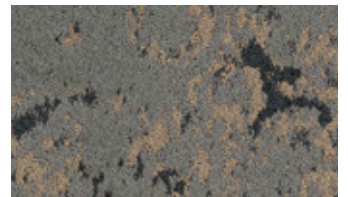
FASHION PLANE 8412 PLASTER



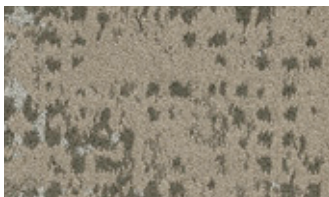
FASHION PLANE 8422 SOD



FASHION PLANE 8616 FLINT



FASHION PLANE 8626 ASH



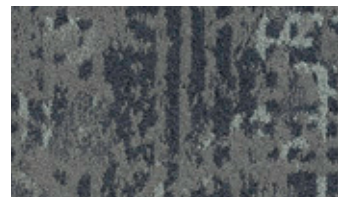
FORMWORK 1413 GRAIN



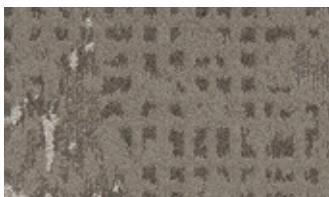
FORMWORK 1423 COB



FORMWORK 4515 WATER



FORMWORK 4525 HENGE



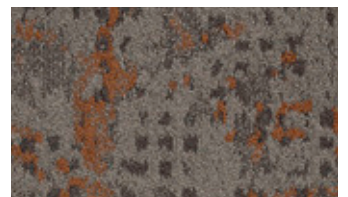
FORMWORK 7414 CORDWOOD



FORMWORK 7424 DAUB



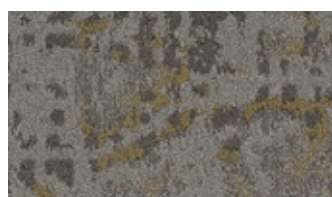
FORMWORK 7811 CLAY



FORMWORK 7821 ADOBE



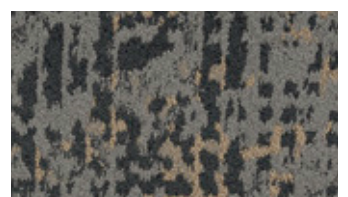
FORMWORK 8412 PLASTER



FORMWORK 8422 SOD



FORMWORK 8616 FLINT



FORMWORK 8626 ASH

NOTE: ADDITIONAL PATTERN OPTIONS are available as running line with no minimums using the Terra Cruda colorways.

FASHION PLANE S4004 | FORMWORK S4002

SPECIFICATIONS

Construction	ColorPoint Technology, Tufted Carpet Tile
Pile Fiber	100% Solution Dyed Nylon
Surface Appearance	Level Patterned Cut & Loop
Gauge	1/10 (39.37 rows per 10cm)
Stitches Per Inch	11 (43.30 per 10cm), Fashion Plane 12" x 48" - 10 (25.40 per 10cm)
Pile Height	0.156"
Total Thickness	0.343"
Tufted Pile Weight	32oz (1085 g/m ²)
Dye Method	Solution Dyed
Primary Backing	100% Synthetic
Secondary Backing	High Performance Vinyl Composite (Non-Ortho Phthalate)
Density	7,384
Protection	Stain & Soil Release Technology
Size	24" x 24" (.6096 m x .6096 m) 12" x 48" (.3048 m x 1.2192 m)
Packaging	24" x 24" - 14 Tiles per Carton, 6.222 SY per Carton 12" x 48" - 14 Tiles per Carton, 6.222 SY per Carton
Installation Method	24" x 24" Brick, Ashlar, Monolithic, Quarter Turn 12" x 48" Ashlar, Herringbone
Adhesive	Signature 3000 Premium Pressure Sensitive Adhesive

Fashion Plane and Formwork are designed with randomness constructed into the pattern to enable tile-ability on the floor. Allowing for no pattern match. Each style with multiple tiles create a unique installation.

TESTING

Radiant Panel (ASTM E-648)	Class 1 (Direct Glue)
Smoke Chamber (ASTM E-662)	Less than 450 (Flaming Mode)
Methenamine Pill Test (ASTM D-2859)	Passes
Dimensional Stability (AACHEN Test)	Passes
Electrostatic Propensity (AATCC 134)	Less than 3.0 KV

WARRANTIES

Limited Lifetime Carpet Tile Warranty including Wear, Delamination, Tuft Bind, Edge Ravel and Static Protection

SUSTAINABILITY

Indoor Air Quality.....CRI Green Label Plus Certified 6LP100143

NOTE: For specifications on **ADDITIONAL PATTERN OPTIONS**, please visit our website at signatureflooring.com/resources

Specifications are based on averages from manufacturing processes and may vary within normal industry tolerances. Material supply and / or manufacturing processes may necessitate specification changes without notice. Such variations do not affect product performance. This carpet is manufactured and recommended for floor covering use only. As in all quality carpet, colors are subject to dye lot variations. These patterns contain inherent characteristics, which may result in pattern run off, and/or pattern appearance variations at the seams or tile edges (darker or lighter pattern lines). These characteristics are inherent in the patterns and are not manufacturing defects. Not all patterns and colors may be aesthetically acceptable with certain installation methods. Signature cannot be responsible for seam aesthetics if the installation method deviates from the recommended layout for that style. Chair pads are recommended under office chairs with rollers to preserve appearance retention, avoid premature or accelerated wear, and act as a deterrent toward delamination. Special backing systems are available that do not require chair pads. Walk off mats are recommended at building entry ways to reduce soiling. For Warranties to apply, all adhesives and seam sealers must be approved by Signature.

For samples, specifications, or technical information please contact your sales representative or call Signature at 800-809-7086

03/2023

 Signature

2222 S HAMILTON STREET, DALTON, GA 30721 • SIGNATUREFLOORING.COM

GLUE DOWN