

Signature

# BIRDS EYE

A Custom Carpet Tile Collection



Signature is a flooring industry leader focused solely on helping our clients create extraordinary hospitality and senior living spaces. Fueled by a passion for our craft and a complete dedication to service, we are driven to achieve exceptional flooring solutions that expand each client's vision. Through creative styling, world-class custom design capabilities, a spirit of innovation and the highest quality of service, we provide an experience as inspiring and authentic as our flooring.

Cover Photo: CT0107 & CT0109 | 24" X 24" Vertical Ashlar Installation Method

# BIRDS EYE COLLECTION

A Custom Carpet Tile Collection



Birds Eye Collection  
embraces our love and  
connection to nature  
through Biophilic design  
from aerial farmlands, and  
inner city connections to  
frozen riverbeds and snow  
capturing trails, the views  
are nothing short of  
breathtaking.

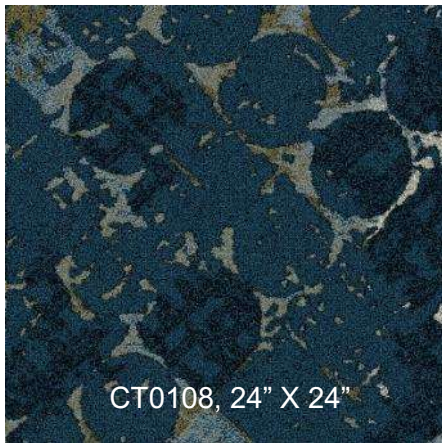




## BIRDS EYE COLLECTION

A Custom Carpet Tile Collection

The Birds Eye Carpet Tile Collection transitions patterns, scales and colors throughout spaces easily from senior living, hospitality and multi-family to corporate, education and retail.



### THREE CARPET TILE PATTERNS FEATURE:

- 4-COLOR COLORPOINT TECHNOLOGY
- 32 OZ. TUFTED WEIGHT
- 100% SOLUTION DYED NYLON
- 24" X 24" CARPET TILE SIZE
- HIGH PERFORMANCE VINYL COMPOSITE BACKING
- MINIMUM ORDER SIZE IS 2,000 SQ YDS
- COORDINATES WITH HUE, SOLID COLOR CARPET TILE FOR ACCENTS, INSETS AND BORDERS ONLY





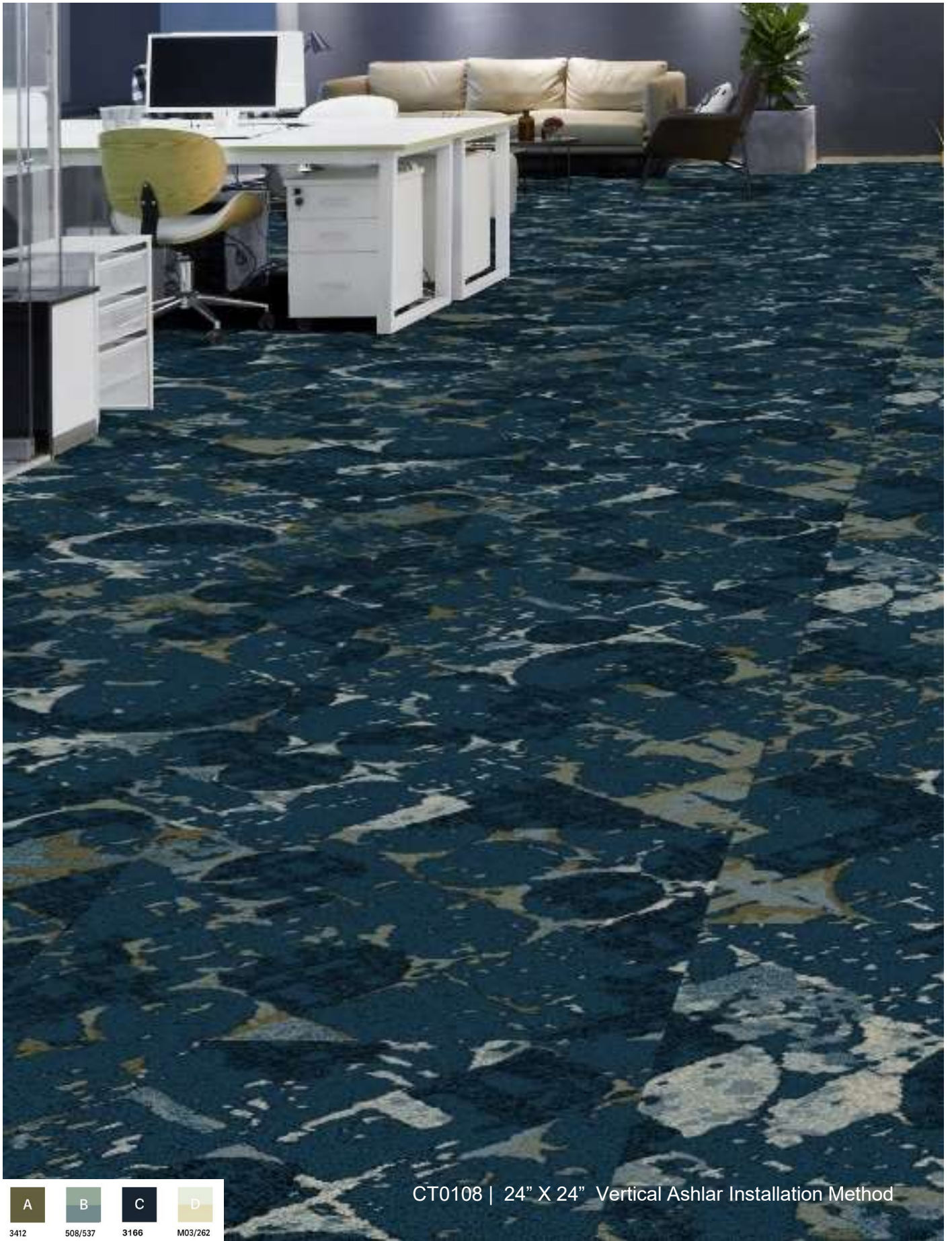




CT0107 | 24" X 24", Vertical Ashlar Installation Method

A	B	C	D
3412	508/537	3166	M03/262





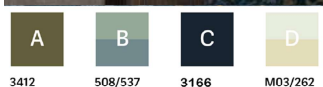
CT0108 | 24" X 24" Vertical Ashlar Installation Method





CT0108 & HUE color 1807 | 24" X 24" Quarter-turn Installation Method



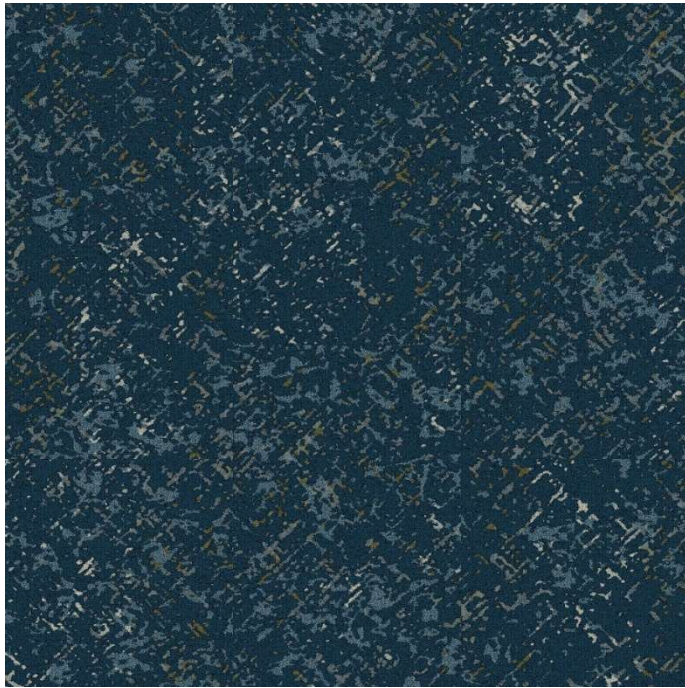


CT0109 | 24" X 24" Monolithic Installation Method

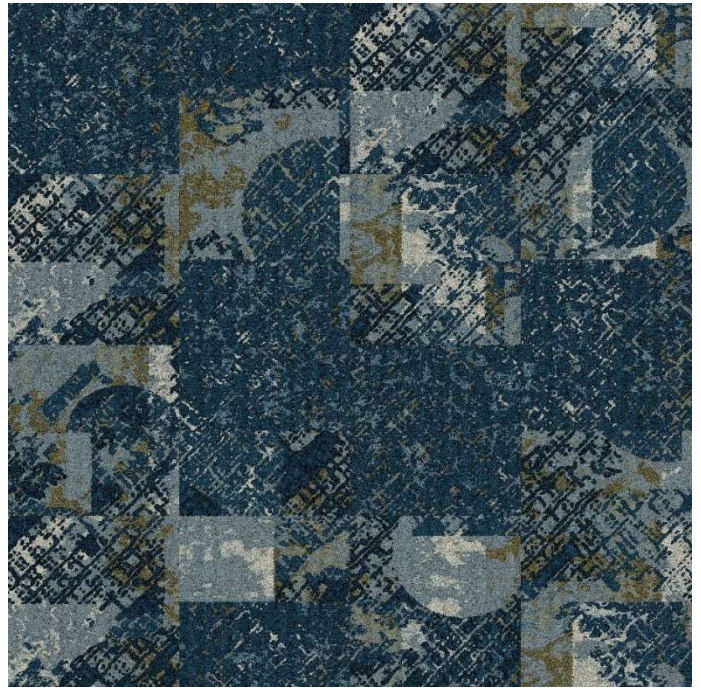


## CREATIVE FLOOR LAYOUTS

The following floor layouts are depicted in the installations featured in this brochure. Birds Eye carpet tile patterns can be used alone or in combination to create any of the layouts shown.



CT0107  
24" X 24" Ashlar Vertical Installation Method  
Representing 3' x 3' area



CT0107 & CT0109  
24" X 24" Vertical Ashlar Installation Method  
Representing 3' x 3' area



CT0108  
24" X 24" Ashlar Vertical Installation Method  
Representing 3' x 3' area

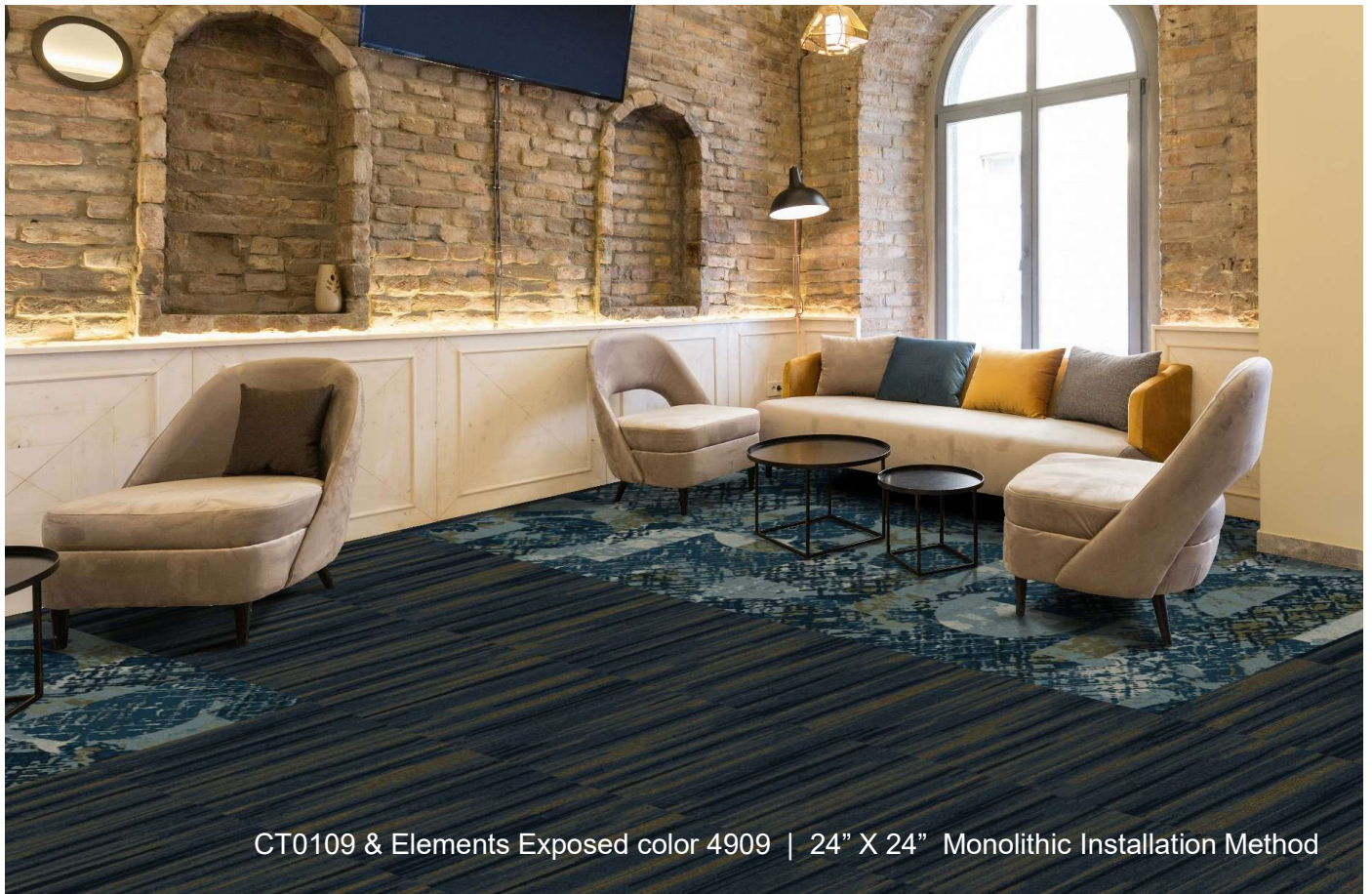


CT0109  
24" X 24" Monolithic Installation Method  
Representing 4' 4' area





CT0107 & Elements Exposed color 4909  
 24" X 24" Quarter Turn Installation Method  
 Representing 4' x 4' area



CT0109 & Elements Exposed color 4909 | 24" X 24" Monolithic Installation Method



# BIRDS EYE CUSTOM BROADLOOM

Birds Eye Collection is available in 13 custom broadloom patterns, featuring 100% solution dyed nylon, ColorPoint technology, 42 oz. tufted pile weight and various widths. Rugs are available in any of the patterns. See the entire collection on Signature Spark at [signatureflooring.com/spark](https://signatureflooring.com/spark)



ZD438 6' W



ZD439 7'5" W



ZD435 7'5" W



ZD436 12' W



ZD437 4' W

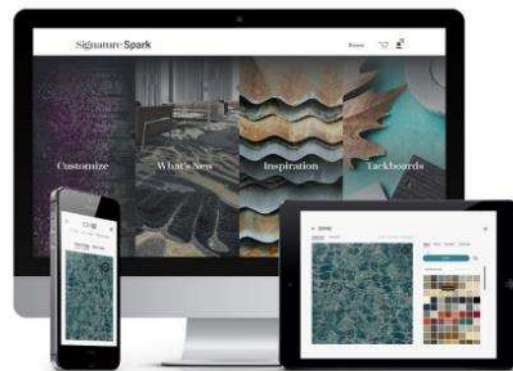


ZD440 3' W





Birds Eye Broadloom Collection  
ZD438 6' W



**IGNITE YOUR CREATIVITY**  
**Recolor. Create. Visualize. Inspire.**

Our easy to use custom design website Signature Spark allows you to recolor custom carpet patterns, create tackboards, manage project assets, find inspiration, visualize in a roomscene and much more. Recolor Canopy or create your own at [signatureflooring.com/spark](https://signatureflooring.com/spark)



FLOORS FOR SIGNATURE SPACES

# BIRDS EYE

A Custom Carpet Tile Collection



 Signature

2222 S HAMILTON STREET, DALTON, GA 30721 · SIGNATUREFLOORING.COM | 800.809.7086