



MATCH STIX

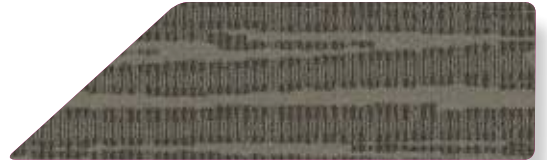


MATCH STIX

MOON GLASS



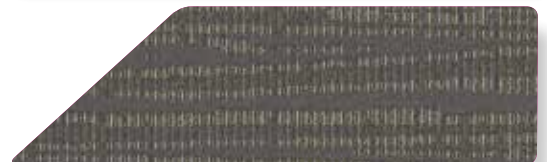
FOSSIL



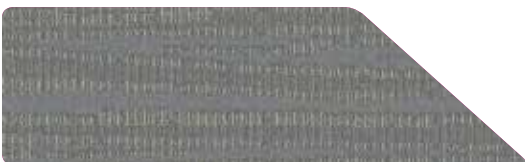
PLAYA



WET STONE



COBALT



QUARTZ



DOLOMITE



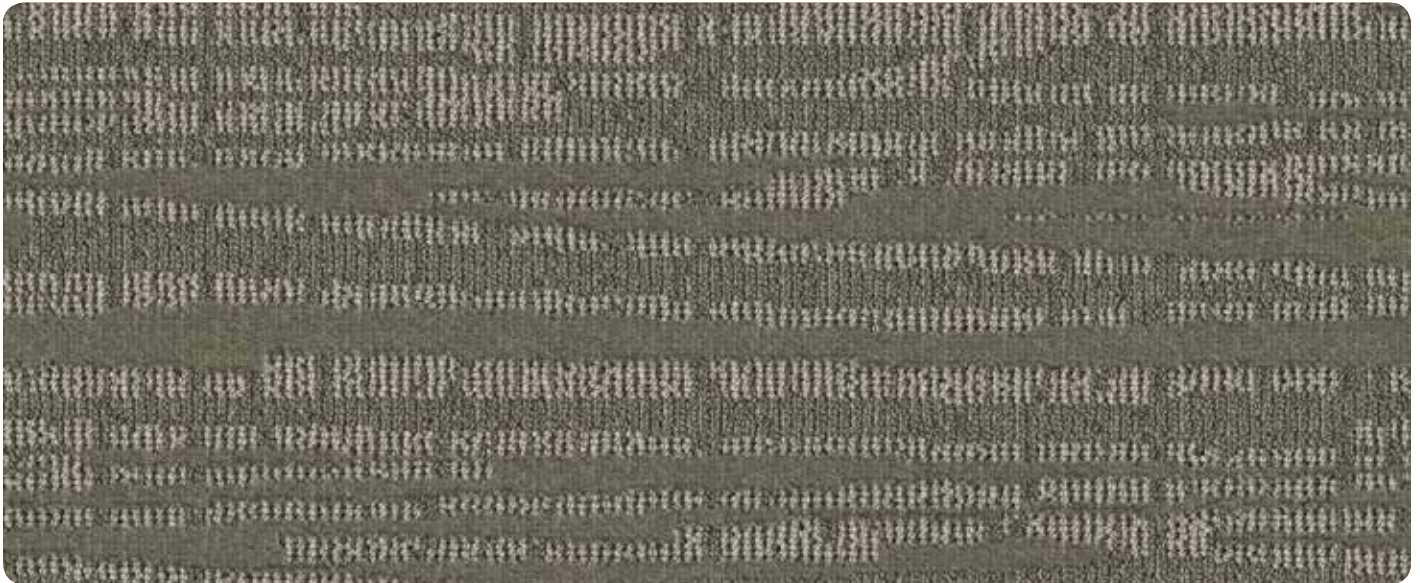
FLINT



MICA

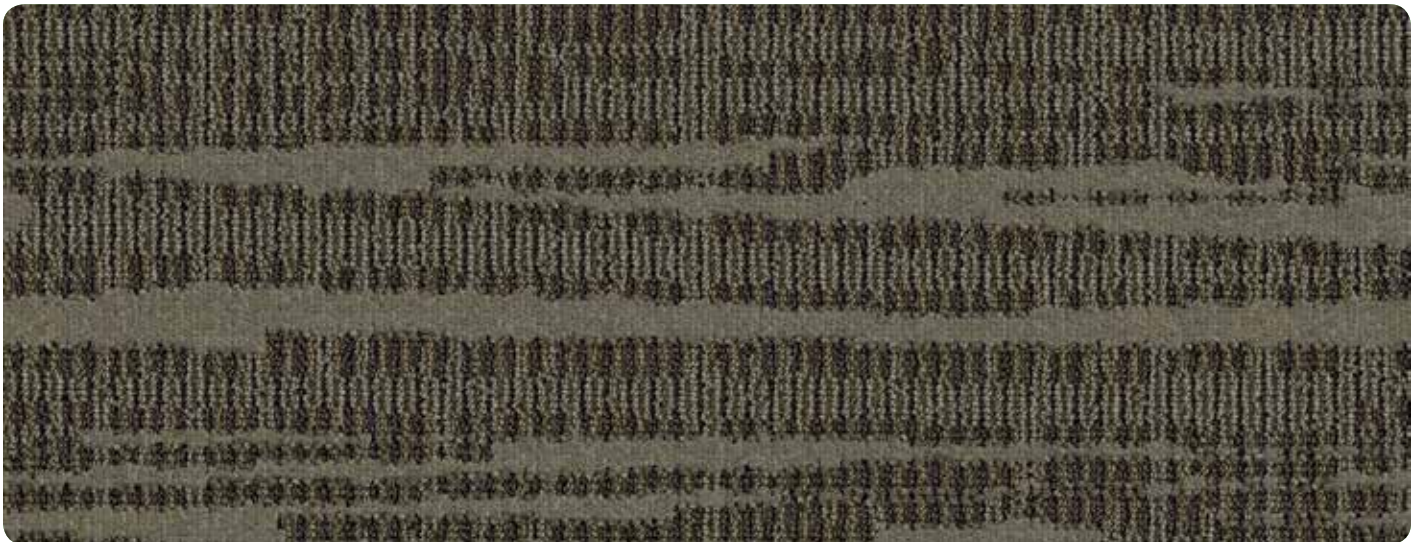
FLOORS FOR
SIGNATURE
SPACES





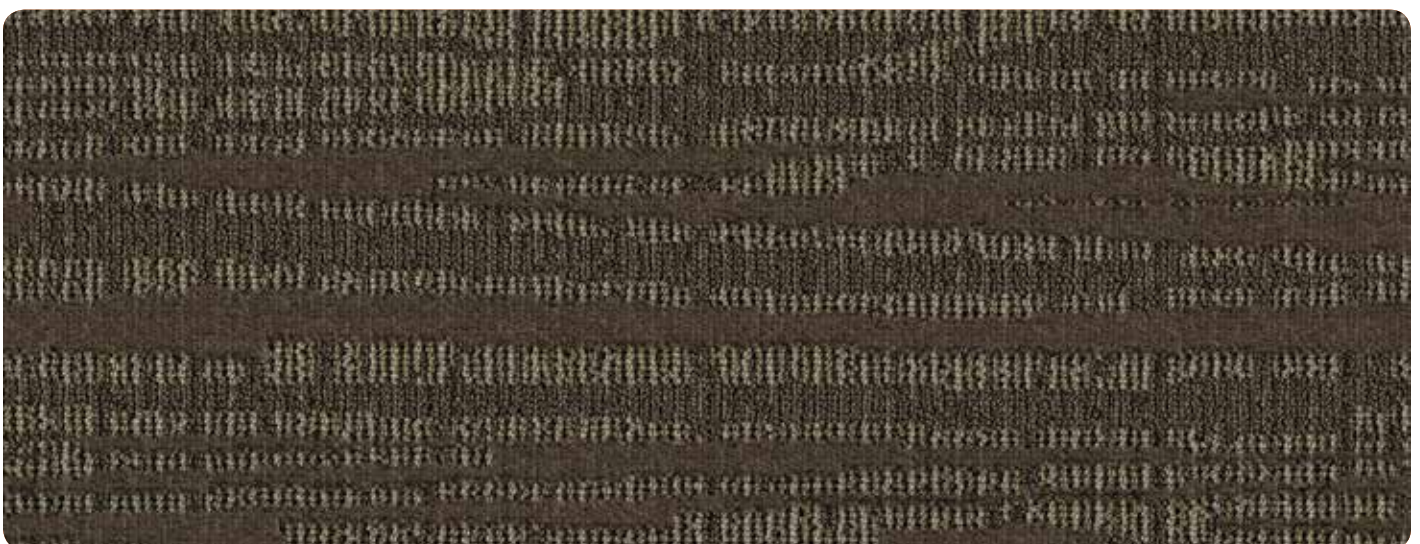
A) 3007 B) 3201 C) 3140

MOON GLASS



A) 3204 B) 3201 C) 3191

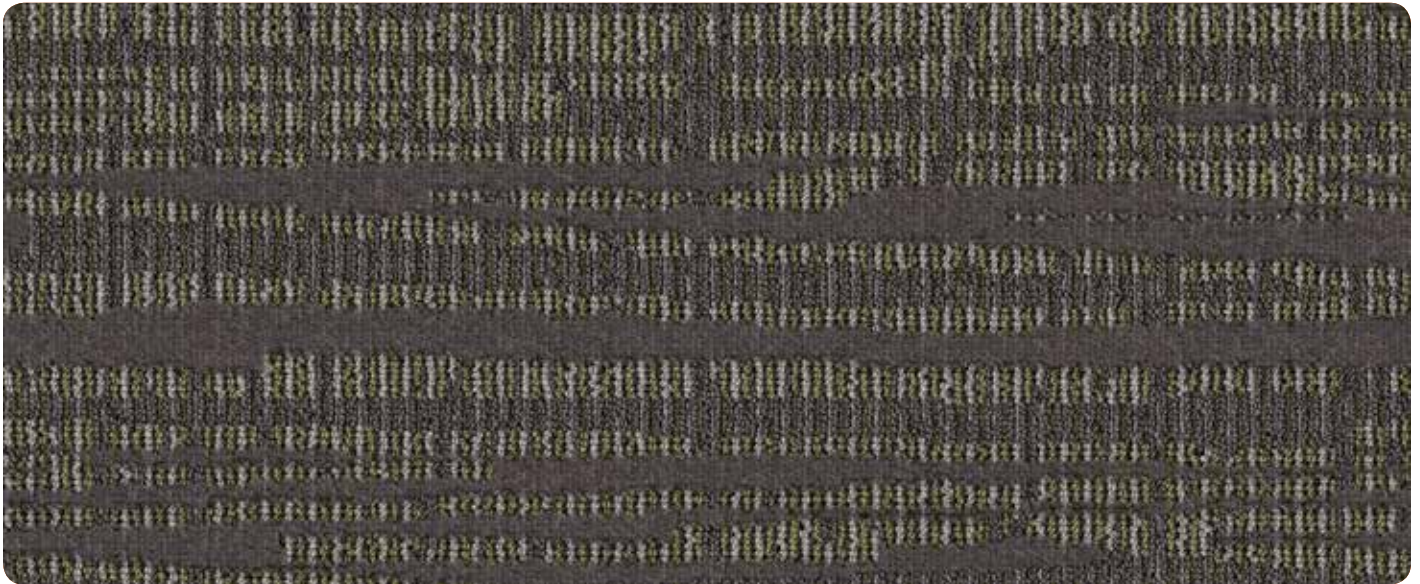
FOSSIL



A) 3231 B) 3238 C) 3236

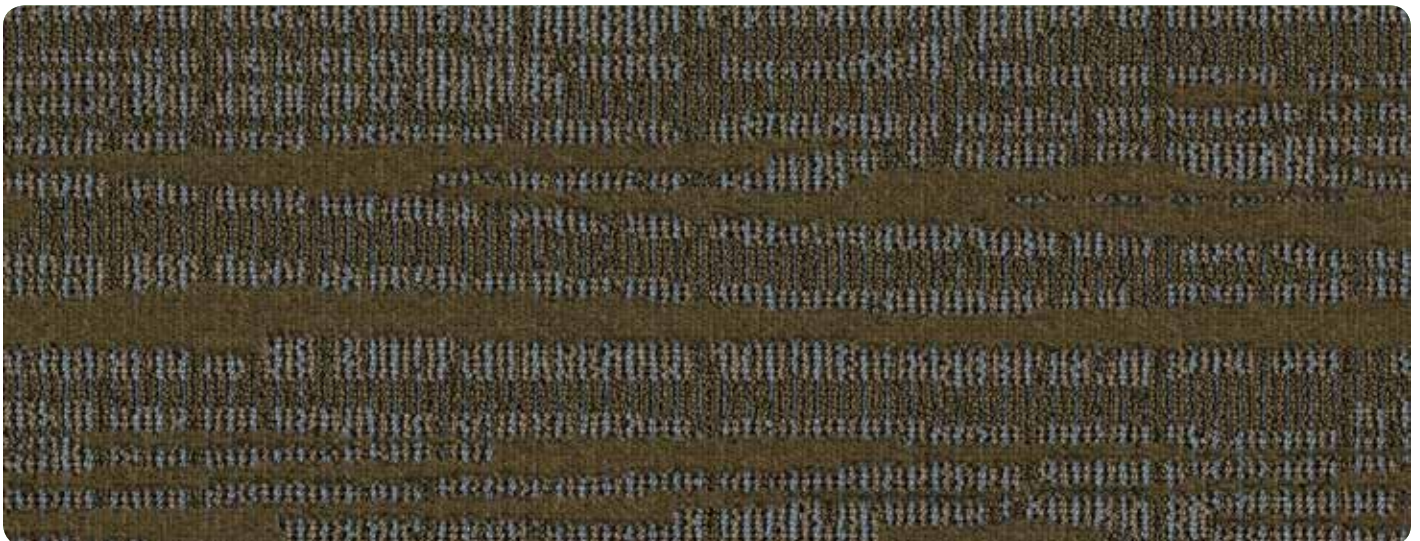
PLAYA





A) 3105 B) 3143 C) 3415

WET STONE



A) 3250 B) 3213 C) 3537

COBALT



A) 3140 B) 3193 C) 3141

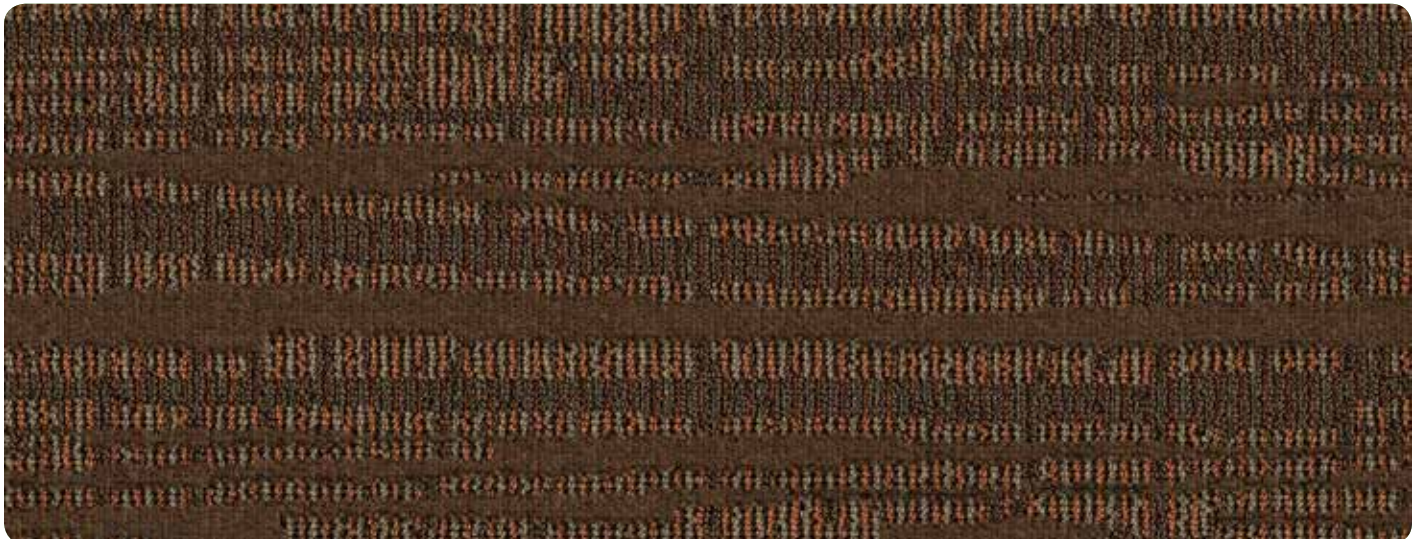
QUARTZ





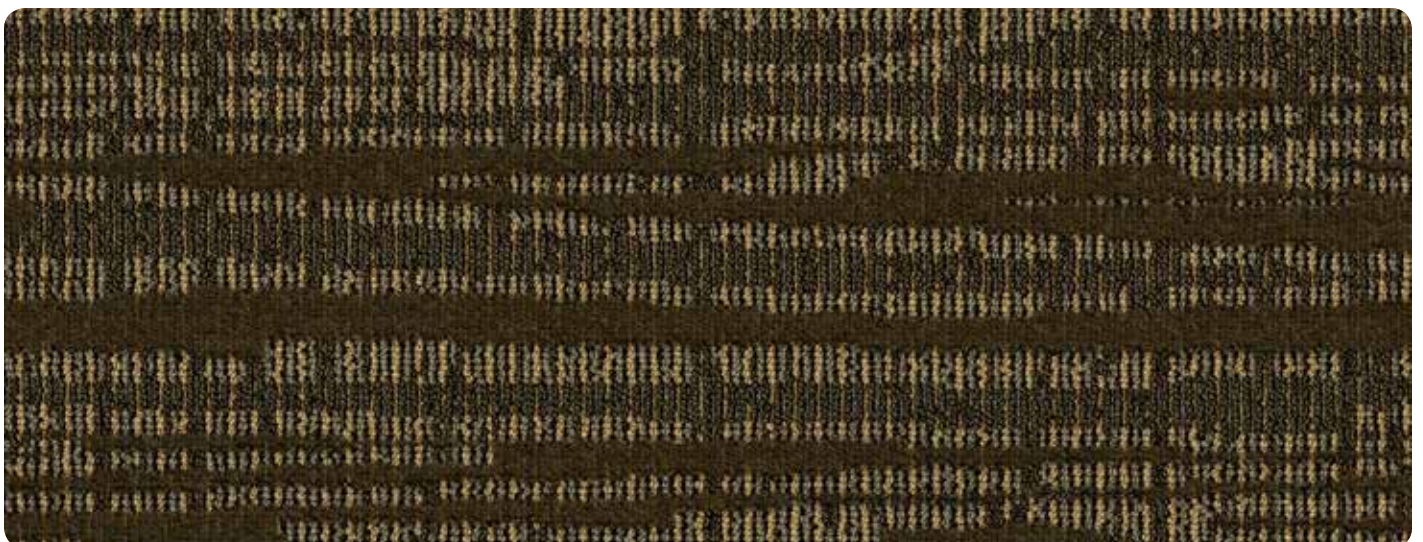
A) 3207 B) 3210 C) 3216

DOLOMITE



A) 3210 B) 3207 C) 3216

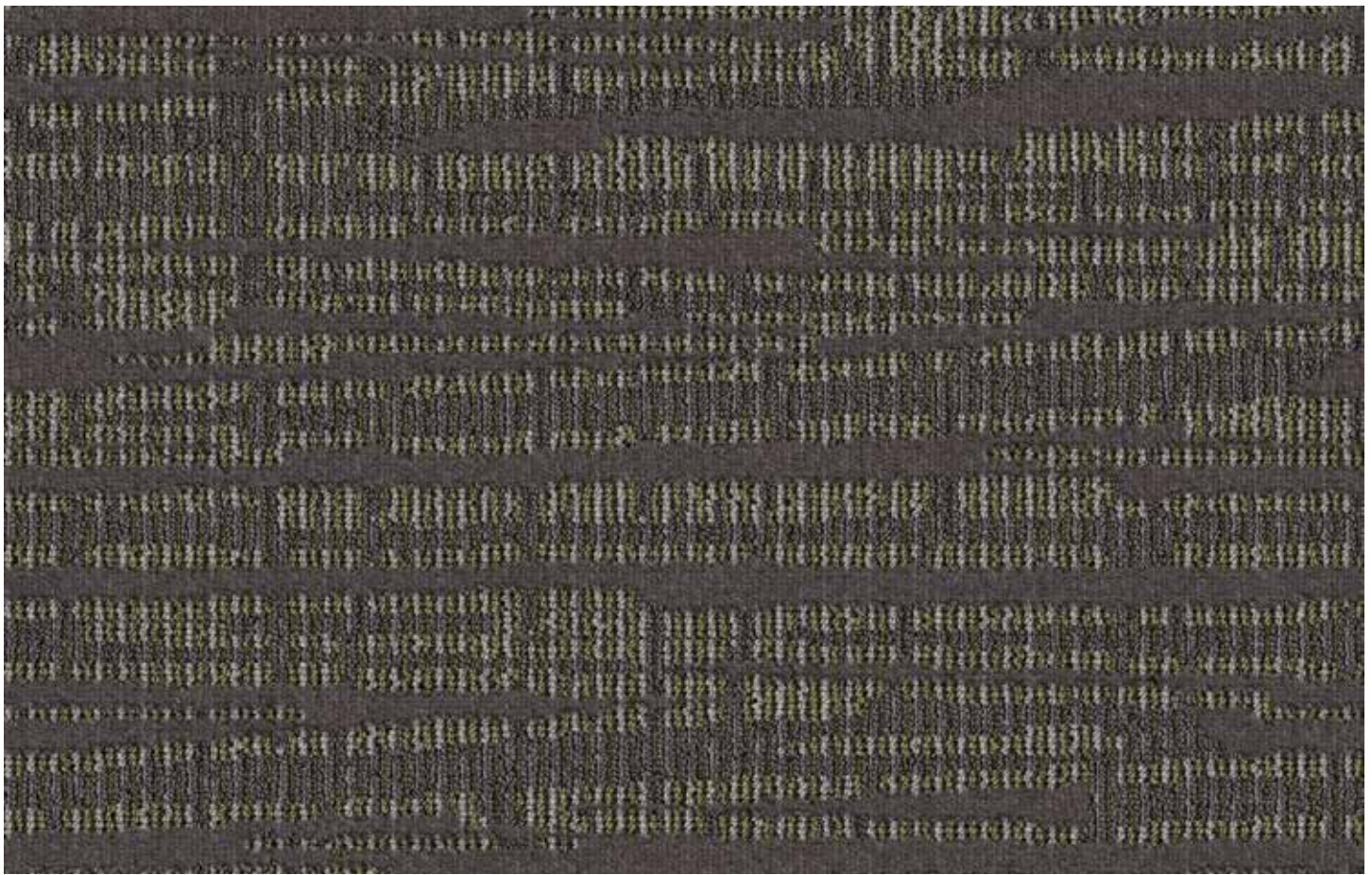
FLINT



A) 3234 B) 3212 C) 3750

MICA





A) 3105 B) 3143 C) 3415

WET STONE

MATCH STIX

CONSTRUCTION

PILE FIBER

STITCH RATE

PILE HEIGHT

TUFTED PILE WEIGHT

DYE METHOD

PRIMARY BACKING

SECONDARY BACKING

WIDTH

DENSITY FACTOR

WEIGHT DENSITY FACTOR

WARRANTY

SOIL & STAIN TREATMENT

PATTERN REPEAT

1/10 INFINITY TIP SHEAR

100% SOLUTION DYED NYLON

14 SPI

.211

32 oz

SOLUTION

WOVEN POLYPROPYLENE

ACTIONBAC

12' up to 15' available

5,460

174,711

TEN YEAR LIMITED WEAR

SCOTCHGARD

24" W x 36" L

TESTING DATA

ASTM E-648 Flooring Radiant Panel:

DOC-FFI-70 Methenamine Pill Test:

Electrostatic Propensity:

E-662 Smoke Chamber:

Class I

Passes AATCC 134

Less than 3.5 KV

Less than 450

Available in 36 oz with 1000 syd minimum

12" x 17" samples available upon request.

Please contact the mill at 800.809.7086 or your local Signature Sales Representative.





FEATURED COLORWAY: MICA



SPECIFICATIONS ARE BASED ON AVERAGES FROM MANUFACTURING PROCESSES AND MAY VARY WITHIN NORMAL INDUSTRY TOLERANCES. MATERIAL SUPPLY AND /OR MANUFACTURING PROCESSES MAY NECESSITATE SPECIFICATION CHANGES WITHOUT NOTICE. SUCH VARIATIONS DO NOT AFFECT PRODUCT PERFORMANCE.

THIS CARPET IS MANUFACTURED AND RECOMMENDED FOR FLOOR COVERING USE ONLY. AS IN ALL QUALITY CARPET, COLORS ARE SUBJECT TO DYE LOT VARIATIONS. FOR OPTIMUM SIDE MATCH AND FINISHED SEAM APPEARANCE, THIS PRODUCT SHOULD BE INSTALLED WHENEVER POSSIBLE, WITH SEAMS RUNNING PERPENDICULAR TO MAJOR EXTERNAL (OUTSIDE) LIGHT SOURCES.

THE EQUIPMENT USED TO MANUFACTURE PATTERNED CARPET MAY CREATE VISIBLE LINES IN BOTH LENGTH AND WIDTH DIRECTIONS. THIS CHARACTERISTIC WILL NOT ALWAYS BE DETECTABLE IN SMALL SAMPLES AND IS NOT CONSIDERED A MANUFACTURING DEFECT.

AS WITH ALL PATTERNED CARPETS, PERFECT PATTERN MATCH MAY NOT BE OBTAINABLE AT SEAMS. TOLERANCES IN PATTERN REGISTRATION—BOW AND SKEW—ARE TO BE EXPECTED. ALL SEAMS AND CUT EDGES AT DOORS AND CLOSETS MUST BE SEAM SEALED.

CHAIR PADS ARE RECOMMENDED UNDER CHAIRS WITH ROLLERS TO PRESERVE APPEARANCE RETENTION, AVOID PREMATURE OR ACCELERATED WEAR, AND ACT AS A DETERRENT TOWARD DELAMINATION. SPECIAL BACKING SYSTEMS ARE AVAILABLE THAT DO NOT REQUIRE CHAIR PADS. WALK OFF MATS ARE RECOMMENDED AT BUILDING ENTRY WAYS TO REDUCE SOILING.

PLEASE CALL SIGNATURE'S TECHNICAL SERVICES DEPARTMENT AT 800-809-7086 FOR ANY QUESTIONS OR ASSISTANCE.



2222 South Hamilton Street • Dalton, GA 30721
P.O. Box 1328, Dalton, GA 30722-1328
1.800.809.7086 • T 706.270.5799 • F 706.270.8779
www.signaturehospitalitycarpets.com