



Signature**NOW**

MODERN STYLE





MODERN STYLE | B7036 TRAVEN | 8305 ASHER

COVER: MODERN STYLE RUG | B7041 NEO | 4501 HUDSON | NATURE CRAFT LVT | CLASSIC GRAY 8307

SIGNATUREFLOORING.COM





MODERN STYLE | B7035 WICK | 8305 ASHER









MODERN STYLE | B7037 FALCO | 8305 ASHER





MODERN STYLE | B7041 NEO | 4501 HUDSON

[SIGNATUREFLOORING.COM](https://signatureflooring.com)





MODERN STYLE BROADLOOM | B7039 KAI | 4501 HUDSON

[SIGNATUREFLOORING.COM](https://signatureflooring.com)





MODERN STYLE | B7040 UTAH | 4501 HUDSON

[SIGNATUREFLOORING.COM](https://signatureflooring.com)





MODERN STYLE | B7040 UTAH | 4501 HUDSON | NATURE CRAFT LVT | TAVERN BROWN 1508

## Signature**NOW** Rugs

- Rugs available in all Modern Style patterns and colorways
- Standard 12' sizes include: 2' x 3', 3' x 5', 5' x 7', 6' x 9', 9' x 12'
- Custom sizes are available larger than 12' widths
- Edging options feature coordinated serging yarn colors or standard binding tape
- Non-Skid padding available





MODERN STYLE | B7040 UTAH | 4501 HUDSON

[SIGNATUREFLOORING.COM](http://SIGNATUREFLOORING.COM)





MODERN STYLE RUG | B7041 NEO | 4501 HUDSON | NATURE CRAFT LVT | CLASSIC GRAY 8307





B7038 LOMAX | 8305 ASHER | COORDINATING SOLID COVE BASE SHOWN WITH BINDING TAPE

## Signature**NOW** Cove Base

- Cove base is available in seven coordinating solid colorways or use an existing pattern up the wall
- 100% Solution Dyed
- Edging options feature coordinated serging yarn colors or standard binding tape
- 4" Height Standard





1302 ARLO



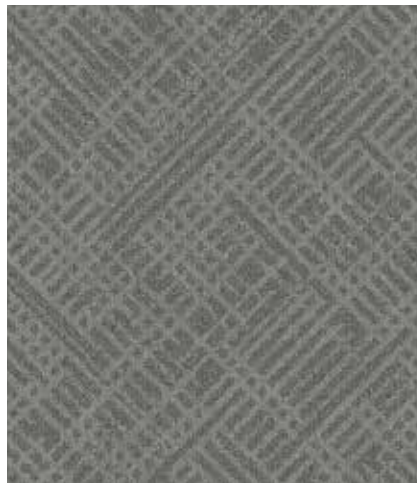
5203 EZRA



7404 HARPER



2206 ZEPHYR



8305 ASHER



4907 MAVERICK



4501 HUDSON

All Modern Style patterns are available in all colors. Colorways above are shown in the style B7038 LOMAX. Rugs and coordinating 4" cove base are available in all patterns and colorways, with solid options available for cove base. Standard binding tape or coordinated serging yarns and non-skid padding are available.



## MODERN STYLE GUESTROOM CARPET



WICK (B7035) / TRAVEN B7036) / FALCO (B7037) / LOMAX (B7038) - Broadloom

### SPECIFICATIONS

Construction:	Tufted Infinity
Pile Fiber:	100% Solution Dyed Nylon
Surface Appearance:	Level Patterned Cut & Loop
Gauge:	1/10 (39.37 rows per 10 cm)
Stitches Per Inch:	WICK (B7035) 15 / TRAVEN (B7036) 14.5 FALCO (B7037) 15 / LOMAX 14
Pile Height:	WICK (B7035) .186 / TRAVEN (B7036) .179 FALCO (B7037) .181 / LOMAX .181
Total Thickness:	WICK (B7035) Approx. 10/32" / TRAVEN (B7036) Approx. 10/32" FALCO (B7037) Approx. 10/32" / LOMAX (B7038) Approx. 10/32"
Tufted Pile Weight:	32 oz. per sq. yd. (1085 g/m <sup>2</sup> )
Dye Method:	Solution Dyed
Pattern Repeat:	WICK (B7035) 24"x24" / TRAVEN (B7036) 36"x32" FALCO (B7037) 36"x48" / LOMAX (B7038) 36"x36"
Primary Backing:	Woven Polypropylene
Secondary Backing:	High Performance SBR latex with attached woven secondary
Density:	WICK (B7035) 6,108 / TRAVEN (B7036) 6,346 FALCO (B7037) 6,276 / LOMAX 6,276
Protection:	Stain & Soil Release Technology
Width:	12'
Adhesive:	Signature 2800 Multi-Purpose Latex Signature 1801 Universal Seam Sealer must be used for all installations where seaming is necessary.

### TESTING

Radiant Panel (ASTM E-648):	Class 1 (Direct Glue)
Smoke Chamber (ASTM E-662):	Less than 450 (Flaming Mode)
Methenamine Pill Test (ASTM D-2859):	Passes
Electrostatic Propensity (AATCC 134):	Less than 3.5 KV

### WARRANTY

Limited 10 Year Commercial Wear Warranty

### SUSTAINABILITY

CRI Green Label Plus:	GLP 2121 Certified
Made in USA	

Specifications are based on averages from manufacturing processes and may vary within normal industry tolerances. Material supply and / or manufacturing processes may necessitate specification changes without notice. Such variations do not affect product performance. This carpet is manufactured and recommended for floor covering use only. As in all quality carpet, colors are subject to dye lot variations. For optimum side match and finished seam appearance, this product should be installed whenever possible, with seams running perpendicular to major external (outside) light sources. The equipment

used to manufacture patterned (graphics) carpet may create visible lines in both length and width directions. This characteristic will not always be detectable in small samples and is not considered a manufacturing defect. Chair pads are recommended under office chairs with rollers to preserve appearance retention, avoid premature or accelerated wear, and act as a deterrent toward delamination. Special backing systems are available that do not require chair pads. Walk off mats are recommended at building entry ways to reduce soiling. For Warranties to apply, all adhesives and seam sealers must be approved by Signature.

For samples, specifications, or technical information please contact your sales representative or Signature at 800-809-7086 /signatureflooring.com

## Signature**NOW**

2222 S HAMILTON STREET, DALTON, GA 30721 • SIGNATUREFLOORING.COM



# MODERN STYLE

## PUBLIC SPACE CARPET



### KAI (B7039) / UTAH (B7040) / NEO (B7041) - Broadloom

#### SPECIFICATIONS

Construction:	Tufted Infinity
Pile Fiber:	100% Solution Dyed Nylon
Surface Appearance:	Level Patterned Cut & Loop
Gauge:	1/10 (39.37 rows per 10 cm)
Stitches Per Inch:	KAI (B7039) 17.5 / UTAH (B7040) 16.6 NEO (B7041) 17
Pile Height:	KAI (B7039) .165 / UTAH (B7040) .174 NEO (B7041) .171
Total Thickness:	KAI (B7039) Approx. 10/32" / UTAH (B7040) Approx. 10/32" / NEO (B7041) Approx. 10/32"
Tufted Pile Weight:	36 oz. per sq. yd. (1220 g/m <sup>2</sup> )
Dye Method:	Solution Dyed
Pattern Repeat:	KAI (B7039) 90"x67.5" / UTAH (B7040) 90"x120" NEO (B7041) 90"x72"
Primary Backing:	Woven Polypropylene
Secondary Backing:	High Performance SBR latex with attached woven secondary
Density:	KAI (B7039) 7,745 / UTAH (B7040) 7,345 NEO (B7041) 7,474
Protection:	Stain & Soil Release Technology
Width:	15'
Adhesive:	Signature 2800 Multi-Purpose Latex Signature 1801 Universal Seam Sealer must be used for all installations where seaming is necessary.

#### TESTING

Radiant Panel (ASTM E-648):	Class 1 (Direct Glue)
Smoke Chamber (ASTM E-662):	Less than 450 (Flaming Mode)
Methenamine Pill Test (ASTM D-2859):	Passes
Electrostatic Propensity (AATCC 134):	Less than 3.5 KV

#### WARRANTY

Limited 10 Year Commercial Wear Warranty

#### SUSTAINABILITY

CRI Green Label Plus: GLP 2121 Certified  
Made in USA

Specifications are based on averages from manufacturing processes and may vary within normal industry tolerances. Material supply and / or manufacturing processes may necessitate specification changes without notice. Such variations do not affect product performance. This carpet is manufactured and recommended for floor covering use only. As in all quality carpet, colors are subject to dye lot variations. For optimum side match and finished seam appearance, this product should be installed whenever possible, with seams running perpendicular to major external (outside) light sources. The equipment

used to manufacture patterned (graphics) carpet may create visible lines in both length and width directions. This characteristic will not always be detectable in small samples and is not considered a manufacturing defect. Chair pads are recommended under office chairs with rollers to preserve appearance retention, avoid premature or accelerated wear, and act as a deterrent toward delamination. Special backing systems are available that do not require chair pads. Walk off mats are recommended at building entry ways to reduce soiling. For Warranties to apply, all adhesives and seam sealers must be approved by Signature.

For samples, specifications, or technical information please contact your sales representative or Signature at 800-809-7086 /signatureflooring.com

## SignatureNOW

2222 S HAMILTON STREET, DALTON, GA 30721 • SIGNATUREFLOORING.COM



