



Rendezvous Monarch

Signature



Discover the serene energy and harmonious tranquility of nature, beautifully expressed in sophisticated elegance and expert craftsmanship of our Rendezvous Collections.

Rendezvous Landscapes

Guestrooms

Broadloom

Rendezvous Monarch

Guestrooms, Public Space, Corridors

Carpet Tile

Rendezvous Oasis

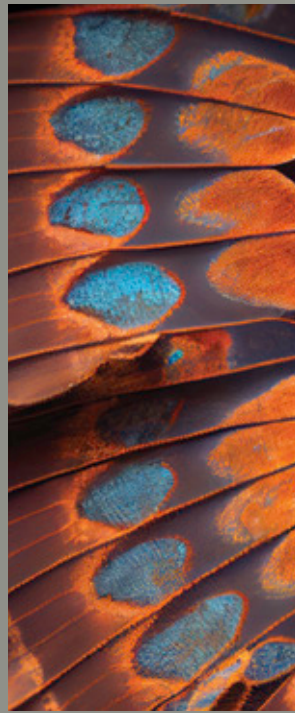
Guestrooms, Public Space, Corridors

Broadloom, Carpet Tile

Rendezvous Vista

Guestrooms

Hard Surface, SPC



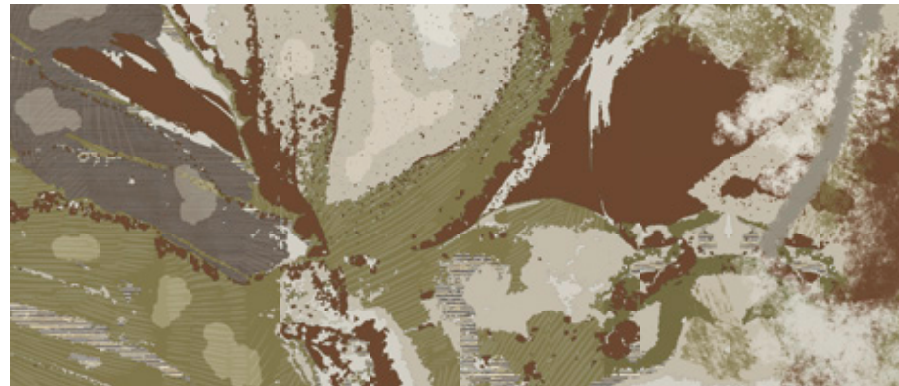
Rendezvous Monarch

Inspired by the delicate symmetry and vibrant colors of butterfly wings, Rendezvous Monarch captures the essence of elegance and fluidity, making it a stunning addition to any design. This collection offers a harmonious blend of intricate patterns and rich textures, creating a visual tapestry that brings the enchanting allure of the natural world into the heart of hospitality environments.

Rendezvous Monarch designed in collaboration with Stacy Garcia Studio.



Rendezvous Monarch



The Rendezvous Monarch Collection boasts six intricately crafted patterns, including the two running line patterns: Interlude and Flight. Interlude symbolizes a moment of rest, featuring gentle, flowing lines that invite calm and contemplation, while Flight embodies movement and energy with its dynamic, sweeping curves that mirror the graceful flutter of butterfly wings. Together, these patterns reflect the elegance and natural beauty of their inspirations, complemented by four additional designs that enhance versatility and visual appeal.

Rendezvous Monarch features seven carefully curated colorways. Inspired by the vibrant hues and delicate nuances of butterfly wings, the colors reflect the serene landscapes where these creatures often alight and take flight.

- Interlude and Flight Running Line Patterns
- Four Alternate Patterns Available
- 24" x 24" Carpet Tile
- 100% Solution Dyed Nylon
- ColorPoint Tufting Technology
- 32 oz Tufted Pile Weight
- Stain and Soil Release Technology
- BioCel Cushion Backing Optional
- Coordinate with Rendezvous Vista SPC or any of our Loose Lay LVT for seamless transition

RENDEZVOUS MONARCH | SG021 FLIGHT | 6405 LAUREL | 24" x 24" CARPET TILE | ASHLAR HORIZONTAL



RENDEZVOUS MONARCH | SG021 FLIGHT | 1202 MEADOW | 24" x 24" CARPET TILE | ASHLAR HORIZONTAL



RENDEZVOUS MONARCH | SG021 FLIGHT | 7604 SAVANNA | 24" x 24" CARPET TILE | ASHLAR HORIZONTAL





RENDEZVOUS MONARCH | SG020 INTERLUDE | 4706 GLADE | 24" x 24" CARPET TILE | ASHLAR HORIZONTAL



RENDEZVOUS MONARCH | SG020 INTERLUDE | 1803 CANYON | 24" x 24" CARPET TILE | ASHLAR HORIZONTAL



Additional Pattern Options

Transform spaces into serene retreats with Rendezvous Monarch's additional pattern options. Flow, Flux, Migration and Stir are designed for coordination and flexibility in creating inviting interiors.

- Featuring Four Additional Patterns: Flow, Flux, Migration and Stir
- ColorPoint Technology
- 100% Solution Dyed Nylon
- 32 oz. Tufted Pile Weight
- Available in 24" x 24" carpet tile
- Additional pattern options are available as running line with no minimums using Rendezvous Monarch colorways



MIGRATION SG024 | 1301 PRAIRIE | 24" x 24" CARPET TILE | ASHLAR HORIZONTAL
ADDITIONAL PATTERN OPTION



FLUX SG022 | 8607 FOREST | 24" x 24" CARPET TILE | ASHLAR HORIZONTAL
ADDITIONAL PATTERN OPTION



Rendezvous Vista, SPC beautifully coordinates with our Rendezvous Landscapes, Monarch or Oasis offering a stunning wood border with rug inset that enhances the overall aesthetic of guestrooms.

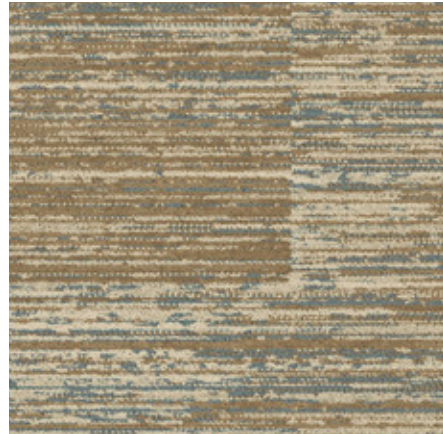


STIR SG025 | 4706 GLADE | 24" x 24" CARPET TILE | ASHLAR HORIZONTAL
ADDITIONAL PATTERN OPTION

RENDEZVOUS MONARCH | SG020 INTERLUDE | 1301 PRAIRIE | 24" x 24" CARPET TILE
RENDEZVOUS VISTA, PICTURESQUE SPC SG505 | 9120 WATTIS

RENDEZVOUS MONARCH COLORWAYS

Colorways shown in pattern Interlude. All patterns available in all colorways.



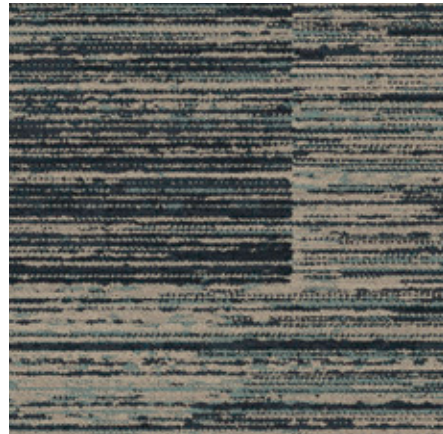
1202 MEADOW



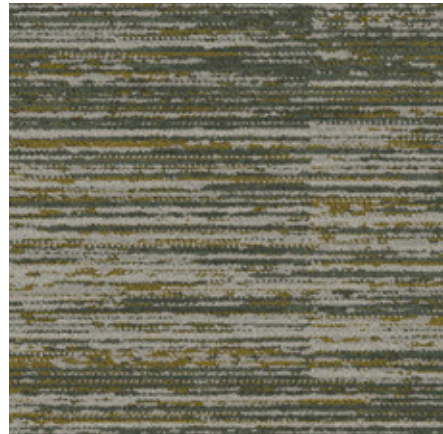
1301 PRAIRIE



1803 CANYON



4706 GLADE



6405 LAUREL



7604 SAVANNA



8607 FOREST

NOTE: ADDITIONAL PATTERN OPTIONS are available as running line with no minimums using the Rendezvous Monarch colorways.

RENDEZVOUS MONARCH FLIGHT SG021, INTERLUDE SG020

SPECIFICATIONS

Construction	ColorPoint Technology
Pile Fiber	100% Solution Dyed Nylon
Surface Appearance	Level Patterned Cut & Loop
Gauge	1/10 (39.37 rows per 10 cm)
Stitches Per Inch	11 (43.30 per 10 cm)
Average Pile Height	Average .169"
Total Thickness	10/32"
Tufted Pile Weight	32oz (1085 g/m ²)
Dye Method	Solution Dyed
Primary Backing	100% Synthetic
Secondary Backing	High Performance Vinyl Composite (Non-Ortho Phthalate)
Density	7,195
Protection	Soil & Stain Release Technology
Size	24" x 24" (.6096 m x .6096 m)
Packaging	18 Tiles per Carton, 7.99 SY per Carton
Installation Method	Brick Ashlar, Vertical Ashlar, Quarter Turn, Horizontal Ashlar
Adhesive	Signature 3000 Premium Pressure Sensitive Adhesive

TESTING

Radiant Panel (ASTM E 648)	Class 1 (Direct Glue)
Smoke Chamber (ASTM E 662)	Less than 450 (Flaming Mode)
Methenamine Pill Test (ASTM D-2859)	Passes
Electrostatic Propensity (AATCC 134)	Less than 3.0 KV

WARRANTY

Limited Lifetime Commercial Carpet Tile Warranty including Wear, Delamination, Tuft Bind, Edge Ravel and Static Protection

SUSTAINABILITY

Indoor Air Quality	CRI Green Label Plus Certified 2121
Recycled Content	Carpet tile contains up to 9% and carpet tile cushion contains up to 20% pre and post consumer content

Made in USA

NOTE: For specifications on **ADDITIONAL PATTERN OPTIONS**, please visit our website at signatureflooring.com/resources

Specifications are based on averages from manufacturing processes and may vary within normal industry tolerances. Material supply and / or manufacturing processes may necessitate specification changes without notice. Such variations do not affect product performance. This carpet is manufactured and recommended for floor covering use only. As in all quality carpet, colors are subject to dye lot variations. For optimum side match and finished seam appearance, this product should be installed whenever possible, with seams running perpendicular to major external (outside) light sources. The equipment used to manufacture patterned (graphics) carpet may create visible lines in both length and width directions. This characteristic will not always be detectable in small samples and is not considered a manufacturing defect. Chair pads are recommended under office chairs with rollers to preserve appearance retention, avoid premature or accelerated wear, and act as a deterrent toward delamination. Special backing systems are available that do not require chair pads. Walk off mats are recommended at building entry ways to reduce soiling. For Warranties to apply, all adhesives and seam sealers must be approved by Signature.

NOTE: This product contains a high luster yarn which utilizes cut/sheared processing in the design. The luster level of this yarn may cause a directional effect when viewing the pattern.

For samples, specifications, or other information please contact your sales representative or visit signatureflooring.com

12/2024

 Signature

2222 S HAMILTON STREET, DALTON, GA 30721 • SIGNATUREFLOORING.COM