



Signature

HUE
ACCENTS, INSETS & BORDERS ONLY



Created to coordinate with other carpet tile collections, Hue brings unexpected drama. Inspired by the pops of color seen in art, architecture and fashion. With vivid colors and its linen-like texture, Hue is equal parts bold and soft.

Choose from a striking color palette made to enhance the myriad color needs of interior spaces.

- Infinity Technology
- 100% solution dyed nylon
- 20 oz. tufted pile weight
- Accents, insets and borders only
- Available in 24" x 24" and 12" x 48" carpet tiles



COVER: HUE | 6501 LICHEN | BEVEL ACCENT | 8601 BUS ROUTE | GRID ACCENT | 8601 BUS ROUTE

 Signature



HUE | 4504 CERULEAN BLUE | BEVEL ACCENT | 8601 BUS ROUTE



HUE | 6501 LICHEN | GRID ACCENT | 8601 BUS ROUTE | BEVEL | 8611 GLASS

[SIGNATUREFLOORING.COM](https://signatureflooring.com)



HUE | 2814 COPPER PENNY | FORMWORK | 7811 CLAY, 7821 ADOBE

SIGNATUREFLOORING.COM



HUE | 6501 LICHEN | ELEMENTS DISSOLVED | 7411 NICKEL

SIGNATUREFLOORING.COM

COLORWAYS

Available in 12" x 48" and 24" x 24" carpet tiles.



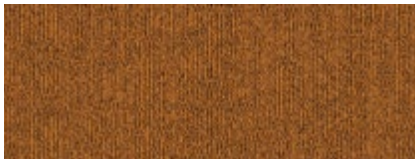
1405 OCHRE



1713 TIGER'S EYE



1807 ANTIQUE BRASS



2415 GOLDFISH



2716 POPPY RED



2814 COPPER PENNY



3809 EGGPLANT



4504 CERULEAN BLUE



4810 MARINE BLUE



4911 NAVY



5403 TURQOISE



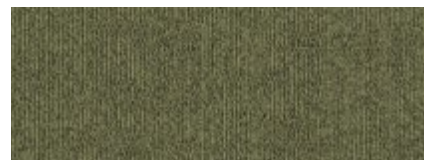
5821 CARIBBEAN



6312 SEA FOAM



6402 SUCCULENT



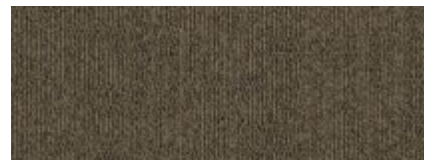
6501 LICHEN



6806 VIRIDEAN



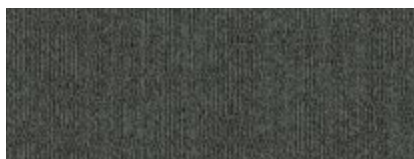
7418 DOE SKIN



7819 KINDLING



8517 METAL



8708 FOG



9920 MIDNIGHT

HUE S4003

SPECIFICATIONS

Construction	Infinity
Pile Fiber	100% Solution Dyed Nylon
Surface Appearance	Multi-Level Patterned Loop
Gauge	1/10 (39.37 rows per 10 cm)
Stitches Per Inch	11.6
Pile Height.....	.125"
Total Thickness250"
Tufted Pile Weight.....	20 oz. per sq. yd.
Dye Method	Solution Dyed
Primary Backing	100% Synthetic
Secondary Backing	High Performance Vinyl Composite (Non-Ortho Phthalate)
Density	5,760
Protection	Soil & Stain Release Technology
Size	24" x 24" (.6096 m x .6096 m) 12" x 48" (.3048 m x 1.2192 m)
Packaging	24" x 24" - 14 tiles per carton, 6.222 sq. yd. per carton 12" x 48" - 14 tiles per carton, 6.222 sq. yd. per carton
Installation Method	Installation is 24" x 24" quarter-turned and 12" x 48" ashlar or herringbone. Both can be two tiles wide maximum.
Adhesive	Signature 3000 Premium Pressure Sensitive

TESTING

Radiant Panel (ASTM E-648).....	Class 1 (Direct Glue)
Smoke Chamber (ASTM E-662).....	Less than 450 (Flaming Mode)
Methenamine Pill Test (ASTM D-2859).....	Passes
Dimensional Stability (AACHEN Test).....	Passes
Electrostatic Propensity (AATCC 134).....	Less than 3.0 KV

WARRANTIES

Limited Lifetime Carpet Tile Warranty including; Wear, Delamination, Tuft Bind, Edge Ravel and Static Protection

SUSTAINABILITY

Indoor Air Quality	CRI Green Label Plus Certified 100143
--------------------------	---------------------------------------

Specifications are based on averages from manufacturing processes and may vary within normal industry tolerances. Material supply and / or manufacturing processes may necessitate specification changes without notice. Such variations do not affect product performance. This carpet is manufactured and recommended for floor covering use only. As in all quality carpet, colors are subject to dye lot variations. These patterns contain inherent characteristics, which may result in pattern run off, and/or pattern appearance variations at the seams or tile edges (darker or lighter pattern lines). These characteristics are inherent in the patterns and are not manufacturing defects. Not all patterns and colors may be aesthetically acceptable with certain installation methods. Signature cannot be responsible for seam aesthetics if the installation method deviates from the recommended layout for that style. Chair pads are recommended under office chairs with rollers to preserve appearance retention, avoid premature or accelerated wear, and act as a deterrent toward delamination. Special backing systems are available that do not require chair pads. Walk off mats are recommended at building entry ways to reduce soiling. For Warranties to apply, all adhesives and seam sealers must be approved by Signature.

For samples, specifications, or other information please contact your sales representative or visit signatureflooring.com

3/2020



2222 S HAMILTON STREET, DALTON, GA 30721 • SIGNATUREFLOORING.COM