



Signature

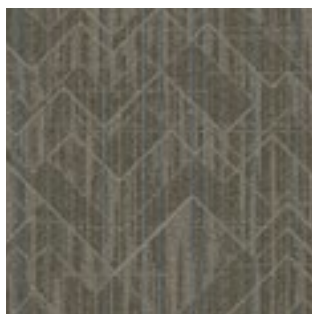
EDGE COLLECTION

EDGE COLLECTION

Inspired by the harmony of geometry and the forefront of modern design, the Edge Collection transcends the ordinary by infusing spaces with a sense of connection, sophistication, and contemporary liveliness for commercial and hospitality spaces.



GRAPHIC



POINT



INVERT/VERTEX



Each pattern is meticulously crafted to create edgy and modern design, inviting you to reimagine carpet tiles in every way.

Graphic's contemporary pattern exemplifies the Edge Collection with bold, robust accentuated lines and linear variegated background. Point displays intersecting lines that converge into sharp points, forming a fragmented mosaic. In contrast, Vertex/ Invert presents a small-scale cross-hatch pattern that embraces intricate details.

The collection features an inviting range of colors, blending modern warmth, coolness, and vibrancy. Each hue is enhanced by thoughtfully chosen yarns, ensuring versatility across different settings. Each pattern is available in a 24" x 24" carpet tile size and can be used alone or mixed together for unlimited creative designs. Let the Edge Collection inspire you to explore new dimensions of style and innovation for your next project.

COVER:

GRAPHIC | 9512 METRON | 24" X 24" | BRICK ASHLAR

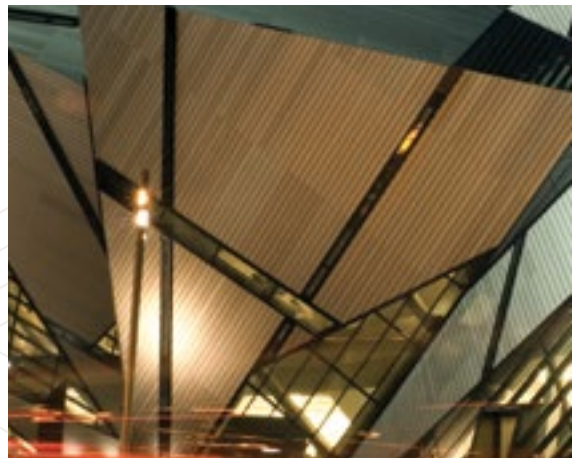
POINT | 9512 METRON | 24" X 24" | BRICK ASHLAR

VERTEX | 9512 METRON | 24" X 24" | BRICK ASHLAR



GRAPHIC RUG INSET | 6411 VECTOR | 24" X 24" | VERTICAL ASHLAR
URBAN ESCAPES LVT | 721 NASHVILLE | 7" X 48"

- 100% Solution Dyed Nylon
- Thoughtfully chosen yarn ensures versatility across different settings
- Graphic and Point - Infinity Technology, 3 Color Construction
- Invert/Vertex - Infinity Technology, 2 Color Construction
- 24 oz Tufted Pile Weight for all patterns
- Available in 24" x 24" carpet tile size, used alone or mixed for unlimited designs
- Ignite your creativity with Signature Spark and customize carpet tile patterns into your projects color scheme
- Broadloom 12' width option available for Invert/Vertex. Optional carpet tile cushion available for all patterns.
- Limited Lifetime Warranty





POINT | 4507 ACUTE | 24" X 24" | BRICK ASHLAR
VERTEX | 4507 ACUTE | 24" X 24" | BRICK ASHLAR



VERTEX | 7606 SLANT | 24" X 24" | BRICK ASHLAR







GRAPHIC | 9512 METRON | 24" X 24" | BRICK ASHLAR
 POINT | 9512 METRON | 24" X 24" | BRICK ASHLAR
 VERTEX | 9512 METRON | 24" X 24" | BRICK ASHLAR



GRAPHIC | 9512 METRON | 24" X 24" | BRICK ASHLAR
 POINT | 9512 METRON | 24" X 24" | BRICK ASHLAR



GRAPHIC RUG INSET | 1602 DIMENSION | 24" X 24" | BRICK ASHLAR | INVERT | 1602 DIMENSION | 24" X 24" | BRICK ASHLAR



GRAPHIC RUG INSET | 2503 AXIOM | 24" X 24" | QUARTER TURN | INVERT | 2503 AXIOM | 24" X 24" | BRICK ASHLAR



POINT | 7606 SLANT | 24" X 24" | VERTICAL ASHLAR

[SIGNATUREFLOORING.COM](https://signatureflooring.com)



POINT RUG INSET | 1505 MEDIAN | 24" X 24" | VERTICAL ASHLAR | **URBAN ESCAPES LVT** | 714 SEATTLE | 7" X 48"
 VERTEX | 1505 MEDIAN | 24" X 24" | QUARTER TURN | **GRAPHIC RUG INSET** | 1505 MEDIAN | 24" X 24" | BRICK ASHLAR



POINT | 6401 GEO | 24" X 24" | BRICK ASHLAR
 GRAPHIC | 6401 GEO | 24" X 24" | BRICK ASHLAR



POINT | 8604 FACTOR | 24" X 24" | BRICK ASHLAR | **GRAPHIC** | 8604 FACTOR | 24" X 24" | BRICK ASHLAR
VERTEX | 8604 FACTOR | 24" X 24" | BRICK ASHLAR



POINT | 4708 PINNACLE | 24" X 24" | BRICK ASHLAR



GRAPHIC | 1505 MEDIAN | 24" X 24" | BRICK ASHLAR



POINT RUG INSET | 9809 RATIO | 24" X 24" | BRICK ASHLAR | VERTEX | 9809 RATIO | 24" X 24" | BRICK ASHLAR

Signature**Spark** allows you to recolor carpet patterns and create tackboards, manage project assets, find inspiration and more.

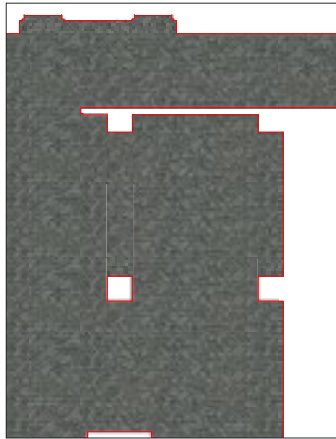
Signature is known for its dedication to helping customers achieve their unique vision for their specific environment. We understand that you are incredibly busy and constantly have tight project timelines. So we offer a broadloom and carpet tile customization process that is fast, easy and doesn't require you to compromise your design vision to meet your deadlines.



INSPIRATION



DESIGN



PLANNING + ESTIMATING



CARPET SAMPLE



POINT | 7606 SLANT

STEP ONE: **INSPIRATION**

The first step to creating a signature floor is simply for you to send us your inspiration for the carpet's design. From this inspiration, we then begin to make your vision a reality.

STEP TWO: **DESIGN**

Our expert Design Team uses the inspiration to create the carpet design and then provides a 2D digital rendering (CAD) of the carpet for your evaluation. Working closely with you ensures the carpet design fully captures your vision. Digitally rendered room scene images using the design are also available.

STEP THREE: **CARPET SAMPLE**

Once the digital rendering of the design is approved, we create a physical sample of the carpet (a "strike-off") and provide it for your evaluation and approval.

STEP FOUR: **PLANNING + ESTIMATING**

We then render floor plans using the design and provide estimated quantities for project accuracy through our experienced Planning and Estimating Team.

STEP FIVE: **PRODUCTION**

When the strike-off is approved, the order can be placed, and we create the custom carpet that is ready for installation. With a simple custom design process, Signature makes it easy for designers to create signature spaces.

Ignite your creativity with Signature Spark. To get started on your custom product, log on to signatureflooring.com/spark or contact us at 800-809-7086.



COLORWAYS

All styles are available in 24" x 24" tiles. Colorways shown in pattern Graphic.



GRAPHIC / POINT 1505 MEDIAN



GRAPHIC / POINT 1602 DIMENSION



GRAPHIC / POINT 2503 AXIOM



GRAPHIC / POINT 4310 CONGRUENT



GRAPHIC / POINT 4507 ACUTE



GRAPHIC / POINT 4708 PINNACLE



GRAPHIC / POINT 6401 GEO



GRAPHIC / POINT 6411 VECTOR



GRAPHIC / POINT 7606 SLANT



GRAPHIC / POINT 8604 FACTOR



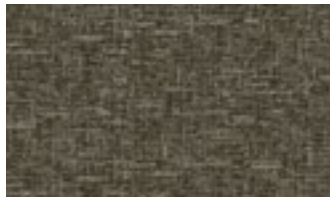
GRAPHIC / POINT 9512 METRON



GRAPHIC / POINT 9809 RATIO



VERTEX 1505 MEDIAN



INVERT 1602 DIMENSION



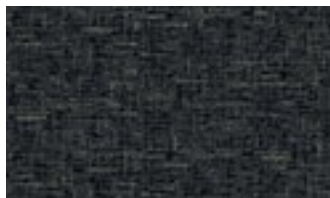
INVERT 2503 AXIOM



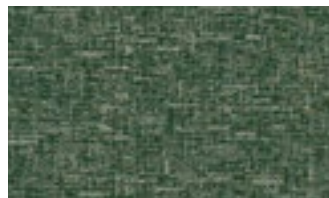
VERTEX 4310 CONGRUENT



VERTEX 4507 ACUTE



VERTEX 4708 PINNACLE



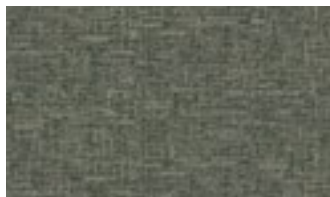
INVERT 6401 GEO



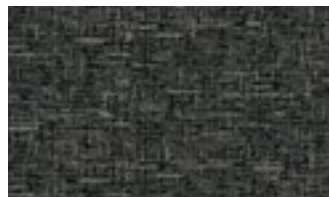
INVERT 6411 VECTOR



VERTEX 7606 SLANT



VERTEX 8604 FACTOR



VERTEX 9512 METRON



VERTEX 9809 RATIO

Vertex and Invert have the same pattern visuals with a broadloom 12' width option available.

GRAPHIC S4016 | POINT S4017 | VERTEX S4018 | INVERT S4019

SPECIFICATIONS

Construction	Infinity
Pile Fiber	100% Solution Dyed Nylon
Surface Appearance	Multi-Level Cut Loop
Gauge	1/10 (39.37 rows per 10cm)
Stitches Per Inch	12 (47.24 per 10cm)
Pile Height	0.171"
Total Thickness	0.281"
Tufted Pile Weight	24oz (680.40 g/m²)
Dye Method	Solution Dyed
Primary Backing	100% Synthetic
Secondary Backing	High Performance Vinyl Composite (Non-Ortho Phthalate) High Performance Vinyl Composite Cushion - Optional
Protection	Stain & Soil Release Technology
Size	24" x 24" (.6096 m x .6096 m)
Packaging	24" x 24" - 18 Tiles per Carton, 7.99 SY per Carton
Installation Method	Brick Ashlar, Vertical Ashlar, Quarter Turn
Adhesive	Signature 3000 Premium Pressure Sensitive Adhesive

Graphic and Point are designed with randomness constructed into the pattern to enable tile-ability on the floor. Allowing for no pattern match. Each style with multiple tiles create a unique installation.

TESTING

Radiant Panel (ASTM E-648)	Class 1 (Direct Glue)
Smoke Chamber (ASTM E-662)	Less than 450 (Flaming Mode)
Dimensional Stability (AACHEN Test)	Passes
Electrostatic Propensity (AATCC 134)	Less than 3.5 KV

WARRANTIES

Limited Lifetime Carpet Tile Warranty including Wear, Delamination, Tuft Bind, Edge Ravel and Static Protection

SUSTAINABILITY

Indoor Air Quality	CRI Green Label Plus Certified GLP100143
Recycled Content	Carpet tile contains up to 9% and carpet tile cushion contains up to 20% pre and post consumer content.

Specifications are based on averages from manufacturing processes and may vary within normal industry tolerances. Material supply and / or manufacturing processes may necessitate specification changes without notice. Such variations do not affect product performance. This carpet is manufactured and recommended for floor covering use only. As in all quality carpet, colors are subject to dye lot variations. These patterns contain inherent characteristics, which may result in pattern run off, and/or pattern appearance variations at the seams or tile edges (darker or lighter pattern lines). These characteristics are inherent in the patterns and are not manufacturing defects. Not all patterns and colors may be aesthetically acceptable with certain installation methods. Signature cannot be responsible for seam aesthetics if the installation method deviates from the recommended layout for that style. Chair pads are recommended under office chairs with rollers to preserve appearance retention, avoid premature or accelerated wear, and act as a deterrent toward delamination. Special backing systems are available that do not require chair pads. Walk off mats are recommended at building entry ways to reduce soiling. For Warranties to apply, all adhesives and seam sealers must be approved by Signature.

For samples, specifications, or technical information please contact your sales representative or call Signature at 800-809-7086

06/2024



2222 S HAMILTON STREET, DALTON, GA 30721 • SIGNATUREFLOORING.COM



Signature

2222 S HAMILTON STREET, DALTON, GA 30721 • SIGNATUREFLOORING.COM