

A stylized palm tree logo in a gold color, positioned behind the word 'SIGNATURE'.

SIGNATURE

**STATIC**



# STATIC

21/11/18

DASH



FORMAT



## FLOORS FOR SIGNATURE SPACES

BROADLOOM & RUGS



MOTION



ATMOSPHERE



KINETIC



ZIP



ENERGY





---

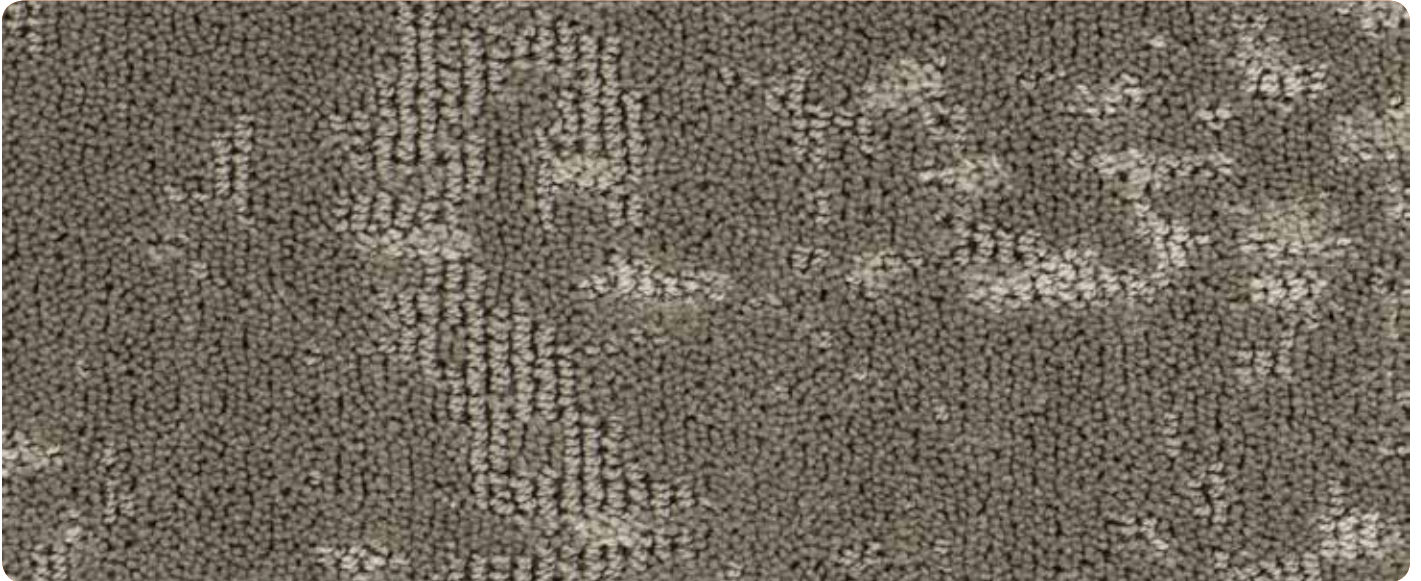
# STATIC BROADLOOM & RUG COLLECTION

---

CONSTRUCTION  
PILE FIBER  
GAUGE  
STITCH RATE  
PILE HEIGHT  
TUFTED PILE WEIGHT  
DYE METHOD  
PRIMARY BACKING  
SECONDARY BACKING  
WIDTH IN FT.  
DENSITY FACTOR  
WEIGHT DENSITY FACTOR  
WARRANTY  
SOIL & STAIN TREATMENT  
PATTERN REPEAT

HIGH PERFORMANCE TUFTED  
100% SDN  
1/10  
13  
.185  
32  
SOLUTION  
WOVEN POLYPROPYLENE  
ACTION BAC  
12'  
6,240  
224,658  
TEN YEAR LIMITED WEAR  
SCOTCHGARD & STAIN RELEASE  
72" x 97.2"





A) 3140 B) 3105

Dash



A) 3201 B) 3126

Format



A) 3412 B) 3238

Zip





A) 3126 B) 3112

Motion



A) 3220 B) 3143

Energy



A) 3143 B) 3123

Atmosphere





A) 408.700 B) 3126

Kinetic

# STATIC

## CONSTRUCTION

PILE FIBER  
 GAUGE  
 STITCH RATE  
 PILE HEIGHT  
 TUFTED PILE WEIGHT  
 DYE METHOD  
 PRIMARY BACKING  
 SECONDARY BACKING  
 WIDTH IN FT.  
 DENSITY FACTOR  
 WEIGHT DENSITY FACTOR  
 WARRANTY  
 SOIL & STAIN TREATMENT  
 PATTERN REPEAT  
 CERTIFICATION

## HIGH PERFORMANCE TUFTED

100% SDN  
 /10  
 13  
 .185  
 32  
 SOLUTION  
 WOVEN POLYPROPYLENE  
 ACTION BAC  
 12'  
 6,240  
 224,658  
 TEN YEAR LIMITED WEAR  
 SCOTCHGARD & STAIN RELEASE  
 72" x 97.2"  
 CARPET & RUG INSTITUTE GLP 2121

## TESTING DATA

ASTM E-648 Flooring Radiant Panel:  
 DOC-FFI-70 Methenamine Pill Test:  
 Electrostatic Propensity:  
 E-622 Smoke Chamber:

Class I  
 Passes AATCC 134  
 Less than 3.5 KV  
 Less than 450

*12" x 17" samples available upon request.*

*Please contact the mill at 800.809.7086 or your local Signature Sales Representative.*





FEATURED COLORWAY: KINETIC



# STATIC RUGS

BY

SIGNATURE



FEATURED COLOR: MOTION





Dash



Format



Motion



Atmosphere



Zip



Energy





Kinetic

## SIZES AVAILABLE

5' x 7'

8' x 10'

10' x 12'

12' x 15'

## 30" x 12' RUNNER

RUGS ARE BOUND WITH A 3" FAUX LEATHER MATERIAL, MITERED CORNERS. AVAILABLE IN 5 SIZES.

Binding Color



Brandy



Forest



Nero





FEATURED COLORWAY: KINETIC



SPECIFICATIONS ARE BASED ON AVERAGES FROM MANUFACTURING PROCESSES AND MAY VARY WITHIN NORMAL INDUSTRY TOLERANCES. MATERIAL SUPPLY AND /OR MANUFACTURING PROCESSES MAY NECESSITATE SPECIFICATION CHANGES WITHOUT NOTICE. SUCH VARIATIONS DO NOT AFFECT PRODUCT PERFORMANCE.

THIS CARPET IS MANUFACTURED AND RECOMMENDED FOR FLOOR COVERING USE ONLY. AS IN ALL QUALITY CARPET, COLORS ARE SUBJECT TO DYE LOT VARIATIONS. FOR OPTIMUM SIDE MATCH AND FINISHED SEAM APPEARANCE, THIS PRODUCT SHOULD BE INSTALLED WHENEVER POSSIBLE, WITH SEAMS RUNNING PERPENDICULAR TO MAJOR EXTERNAL (OUTSIDE) LIGHT SOURCES.

THE EQUIPMENT USED TO MANUFACTURE PATTERNED CARPET MAY CREATE VISIBLE LINES IN BOTH LENGTH AND WIDTH DIRECTIONS. THIS CHARACTERISTIC WILL NOT ALWAYS BE DETECTABLE IN SMALL SAMPLES AND IS NOT CONSIDERED A MANUFACTURING DEFECT.

AS WITH ALL PATTERNED CARPETS, PERFECT PATTERN MATCH MAY NOT BE OBTAINABLE AT SEAMS. TOLERANCES IN PATTERN REGISTRATION—BOW AND SKEW—ARE TO BE EXPECTED. ALL SEAMS AND CUT EDGES AT DOORS AND CLOSETS MUST BE SEAM SEALED.

CHAIR PADS ARE RECOMMENDED UNDER CHAIRS WITH ROLLERS TO PRESERVE APPEARANCE RETENTION, AVOID PREMATURE OR ACCELERATED WEAR, AND ACT AS A DETERRENT TOWARD DELAMINATION. SPECIAL BACKING SYSTEMS ARE AVAILABLE THAT DO NOT REQUIRE CHAIR PADS. WALK OFF MATS ARE RECOMMENDED AT BUILDING ENTRY WAYS TO REDUCE SOILING.

PLEASE CALL SIGNATURE'S TECHNICAL SERVICES DEPARTMENT AT **800-809-7086** FOR ANY QUESTIONS OR ASSISTANCE.



2222 South Hamilton Street • Dalton, GA 30721  
P.O. Box 1328, Dalton, GA 30722-1328  
1.800.809.7086 • T 706.270.5799 • F 706.270.8779  
[www.signaturehospitalitycarpets.com](http://www.signaturehospitalitycarpets.com)