



Signature

CROSSROADS



CROSSROADS

A Journey Woven in Every Thread

Crossroads is a tribute to the spirit of the open road and the enduring craftsmanship that built a nation. Inspired by the rugged textures of denim, the strength of workwear, and the soul of small-town main streets, this collection captures the moment where heritage meets modern design.

At every crossroads—whether it's a sun-soaked front porch, a city-side train stop, or the corner café—stories unfold.

Crossroads channels those layered narratives into textile form, weaving together utility and beauty to create inviting, character-rich surfaces for modern multifamily and commercial environments.

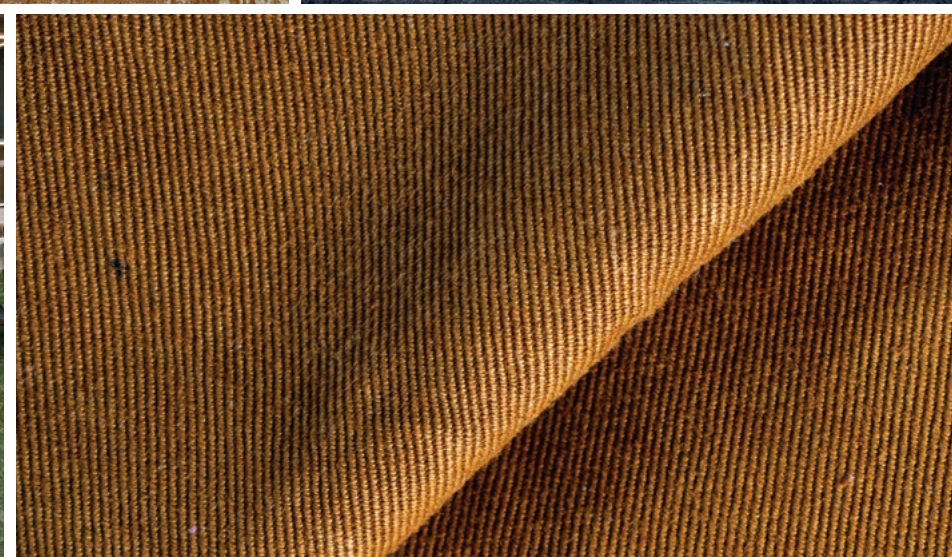
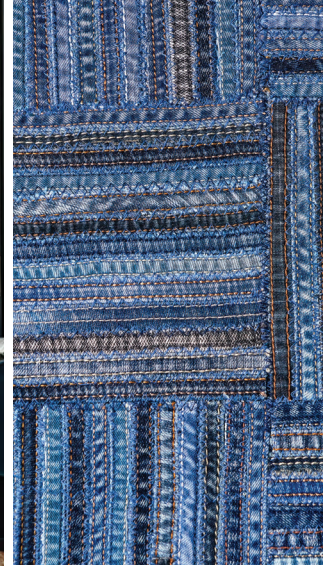
Each pattern draws from the materials that shaped our shared spaces: the faded blue of worn denim, the rhythmic repetition of stitching, and the structured simplicity of riveted seams. The collection evokes a tactile authenticity that feels both familiar and elevated, perfectly suited for spaces that invite connection, comfort, and a sense of belonging.

- Five Patterns and Nine Color Ways
- Infinity Tufting Technology
- 100% Solution Dyed Nylon
- 19 oz. Tufted Pile Weight
- Available in 24" x 24" Carpet Tile
- Broadloom Options Available
- Stain & Soil Release Technology
- Carpet Tile Cushion Backing Optional
- Coordinate with our Loose Lay LVT for Seamless Transition
- Limited Lifetime Commercial Warranty


Signature

CUSTOM CARPET • BROADLOOM CARPET • CARPET TILE • RUGS • ENTRYWAY SYSTEMS • HARD SURFACE







FLANNEL CHIC S4021 | 1804 TOBACCO | 24" x 24" CARPET TILE | INFINITY | QUARTER TURN



FLANNEL CHIC S4021 | 9909 45RPM | 24" x 24" CARPET TILE | INFINITY | ASHLAR HORIZONTAL

SIGNATUREFLOORING.COM

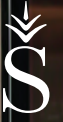


MADRAS S4020 | 2707 SADDLE | 24" x 24" CARPET TILE | INFINITY | ASHLAR VERTICAL





CARDIGAN S4023 | 8913 MIDNIGHT RODEO | 24" x 24" CARPET TILE | INFINITY | ASHLAR HORIZONTAL



CARDIGAN S4023 | 2908 PENNY LOAFER | 24" x 24" CARPET TILE | INFINITY | ASHLAR VERTICAL



STREETWEAR S4024 | 6802 CANVAS CAMO | 24" x 24" CARPET TILE | INFINITY | QUARTER TURN

SIGNATUREFLOORING.COM

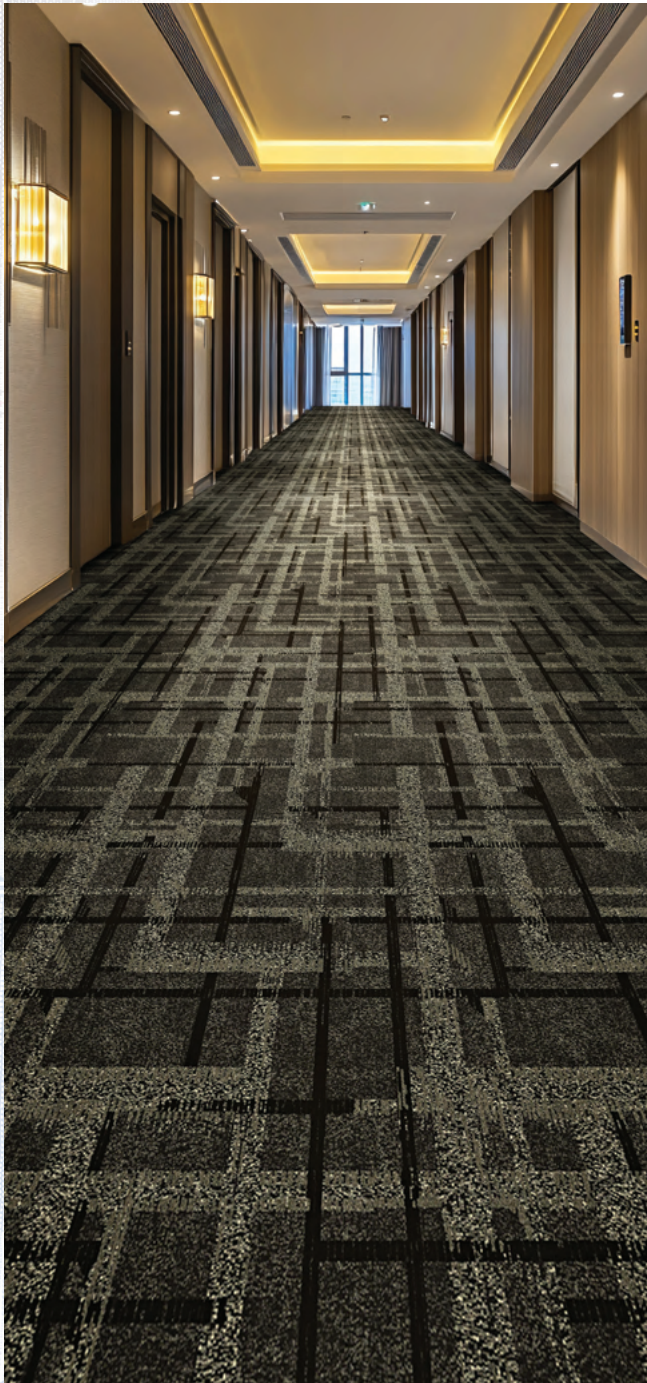


STREETWEAR S4024 | 1314 COWBOY | 24" x 24" CARPET TILE | INFINITY | ASHLAR HORIZONTAL

[SIGNATUREFLOORING.COM](https://signatureflooring.com)

CUSTOM BROADLOOM OPTIONS

For additional broadloom and rug
installation options that coordinate with
Crossroads carpet tile patterns, please visit
SignatureFlooring.com/spark



ZD505 | BROADLOOM VERSION OF **MADRAS S4020** CARPET TILE (ENLARGED)
9909 45RPM | BROADLOOM 15' W | PATTERN REPEAT 90" x 180" | INFINITY



ZD506 | BROADLOOM VERSION OF **STREETWEAR S4024** CARPET TILE
(ENLARGED) | 2908 PENNY LOAFER | BROADLOOM 15' W |
PATTERN REPEAT 90" x 291" | INFINITY



ZD507 | BROADLOOM VERSION OF **DENIM FADE S4022** CARPET TILE
 8611 CHAMBRAY | PATTERN REPEAT 144" x 144" | **URBAN ESCAPES LOOSE LAY LVT** | 402 AUSTIN | 7"W x 48"L

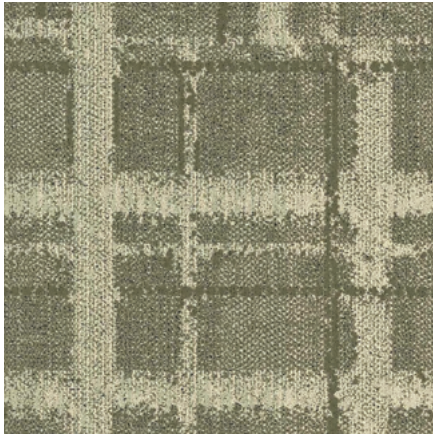


ZD508 | BROADLOOM VERSION OF **MADRAS S4020** CARPET TILE
 6802 CANVAS CAMO | PATTERN REPEAT 48" x 48" | **URBAN ESCAPES LOOSE LAY LVT** | 402 AUSTIN | 7"W x 48"L

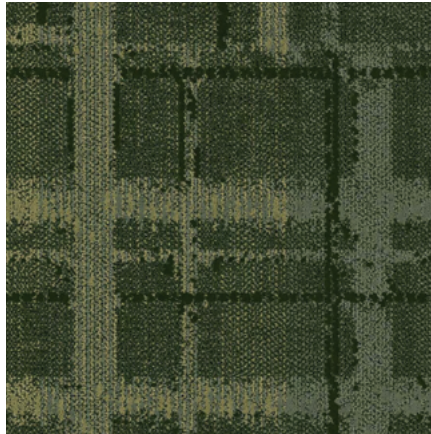
CROSSROAD COLORWAYS



All styles are available in all colorways and in 24" x 24" carpet tile size.
Colorways shown in pattern Madras.



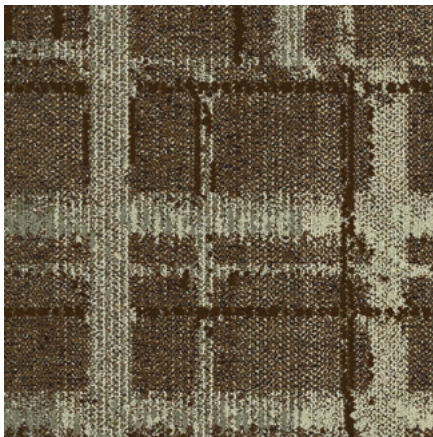
1314 COWBOY



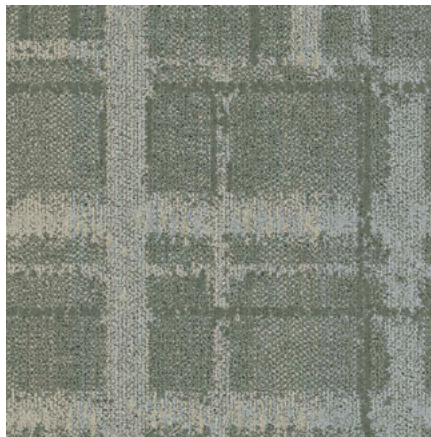
6802 CANVAS CAMO



8913 MIDNIGHT RODEO



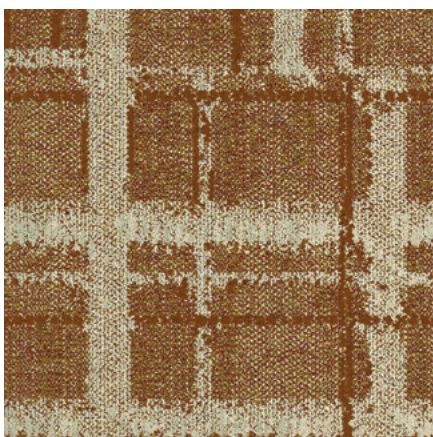
1804 TOBACCO



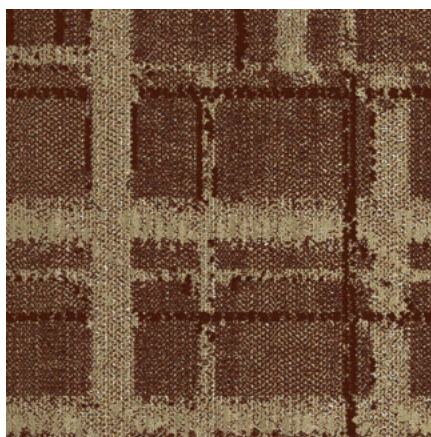
8611 CHAMBRAY



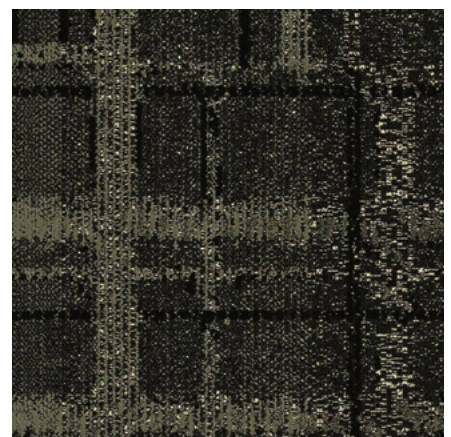
4906 WASHED INDIGO



2707 SADDLE



2908 PENNY LOAFER



9909 45RPM

Crossroads Custom Broadloom and Rug Options available to coordinate with Crossroads carpet tile.
Visit at SignatureSpark.com.

CROSSROADS COLLECTION

CARDIGAN S4023, DENIM FADE S4022, FLANNEL CHIC S4021, MADRAS S4020, STREETWEAR S4024

SPECIFICATIONS

Construction	Infinity Technology
Pile Fiber	100% Solution Dyed Nylon
Surface Appearance	Multi-Level Cut Loop
Gauge	1/10 (39.37 rows per 10cm)
Tufted Pile Weight	19oz (644.21 g/m ²)
Stitches Per Inch	10
Average Pile Height	.125"
Total Thickness	.250"
Dye Method	Solution Dyed
Primary Backing	100% Synthetic
Secondary Backing	High Performance Vinyl Composite (Non-Ortho Phthalate) Carpet Tile Cushion optional
Density	5,472
Protection	Stain & Soil Release Technology
Size	24" x 24" (.6096 m x .6096 m)
Installation Methods	Quarter Turn, Ashlar Horizontal, Ashlar Vertical
Adhesive	Signature 3000 Premium Pressure Sensitive Adhesive

TESTING

Radiant Panel (ASTM E-648)	Class 1 (Direct Glue)
Smoke Chamber (ASTM E-662)	Less than 450 (Flaming Mode)
Dimensional Stability (AACHEN Test)	Passes
Electrostatic Propensity (AATCC 134)	Less than 3.5 KV

WARRANTIES

Limited Lifetime Carpet Tile Warranty including Wear, Delamination, Tuft Bind, Edge Ravel and Static Protection

SUSTAINABILITY

Indoor Air Quality	CRI Green Label Plus Certified GLP100143
Recycled Content	Carpet tile contains up to 9% and carpet tile cushion contains up to 20% pre and post consumer content.

Made in USA

Specifications are based on averages from manufacturing processes and may vary within normal industry tolerances. Material supply and / or manufacturing processes may necessitate specification changes without notice. Such variations do not affect product performance. This carpet is manufactured and recommended for floor covering use only. As in all quality carpet, colors are subject to dye lot variations. These patterns contain inherent characteristics, which may result in pattern run off, and/or pattern appearance variations at the seams or tile edges (darker or lighter pattern lines). These characteristics are inherent in the patterns and are not manufacturing defects. Not all patterns and colors may be aesthetically acceptable with certain installation methods. Signature cannot be responsible for seam aesthetics if the installation method deviates from the recommended layout for that style. Chair pads are recommended under office chairs with rollers to preserve appearance retention, avoid premature or accelerated wear, and act as a deterrent toward delamination. Special backing systems are available that do not require chair pads. Walk off mats are recommended at building entry ways to reduce soiling. For Warranties to apply, all adhesives and seam sealers must be approved by Signature.

For samples, specifications, or technical information please contact your sales representative or call Signature at 800-809-7086

08/2025



2222 S HAMILTON STREET, DALTON, GA 30721 • SIGNATUREFLOORING.COM

GLUE DOWN